

# USER INSTRUCTIONS



Octamoon



LILIENTHAL BERLIN

EN

# TABLE OF CONTENTS

---

## **EN** ENGLISH

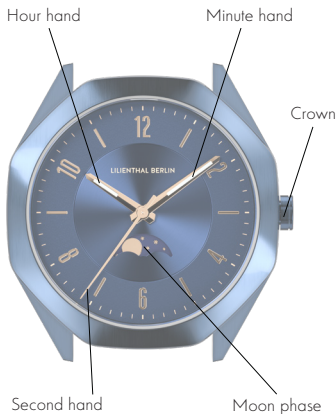
The Octamoon	03
Setting the time	05
With date and weekday	07
The moon phase	11
Changing the strap	13
Care instructions	14
Technical details	15
Warranty	16
Recycling & Disposal	17
Contact	18

# THE OCTAMOON

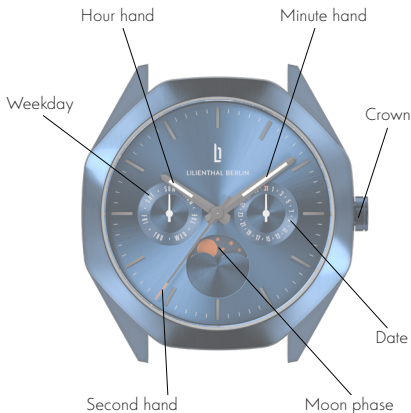
Your new watch is full of intricate details. But first, an overview!

---

The Octamoon  
without date and weekday display:



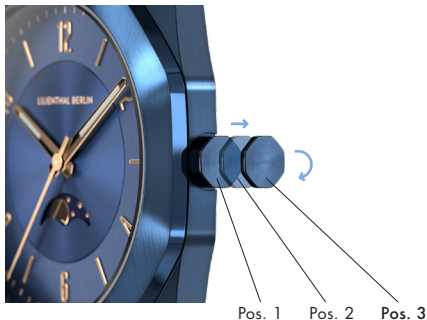
## The Octamoon with date and weekday display:



## SETTING THE TIME

This is how you set the time at the Octamoon without the date and weekday display.

---



1. Pull out the crown (Pos. 3).
2. Turn the crown.



All good?

Then simply push  
the crown back  
into the case  
(Pos. 1).

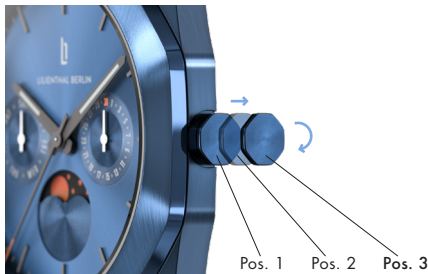
Pos. 1

## WITH DATE AND WEEKDAY

This is how you set the Octamoon with the additional date displays.

---

- a. Start with the weekday. To do this, proceed as follows:



1. Pull the crown out to **Pos. 3** to stop the second hand at 0 (12 o'clock).

2. Turn the hour/minute hand **clockwise** until you reach the correct weekday. For one weekday, you must advance the hour hand by 24 hours per day. Once set, the display will jump to the next day between 0:00 and 5:30 (or slightly later) every night.

**Please note:** Do not turn the crown counterclockwise, as it may cause the weekday to not change correctly.

b. After setting the weekday, you can adjust the exact time. Use the crown in Pos. 3 for this again.



Turn the hour and minute hands **clockwise** to set the time.





After setting the time, push the crown back into the case (Pos. 1) to start the second hand.

**Please note:** Make sure you don't confuse the settings for morning and evening (AM/PM) when adjusting the time. Use the weekday as a reference. When the weekday changes, it is in the morning.

c. Finally: the date. And this is how it works:



1. Pull out the crown halfway (**Pos. 2**).
2. Now, turn the crown **counterclockwise** to the desired date.

**Please note:** Do not set the date between 9:00 PM and 12:30 AM, as it may not switch correctly to the next day.

## THE MOON PHASE

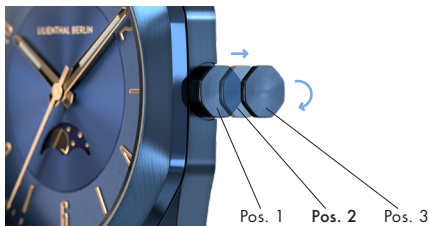
The Octamoon will show you how the moon currently appears in the sky.

---

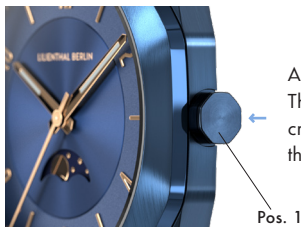
The average time from one new moon to the next is approximately 29.5 days. These phases are divided into new moon, first quarter moon, full moon, and last quarter moon. On your watch display, it looks like this:



This scale is your reference for setting the moon phase. Check the current moon phase in the newspaper or on the internet.



Pull out the crown halfway (**Pos. 2**) and turn it **clockwise** to the phase that is closest to the current age of the moon (new moon, first quarter moon, full moon, or last quarter moon).



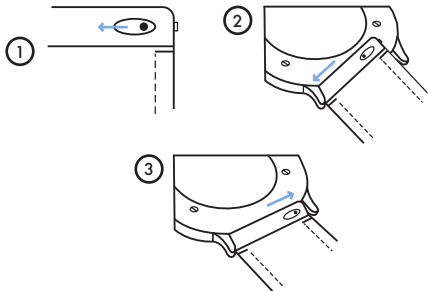
All good?  
Then simply push the  
crown back into  
the case (**Pos. 1**).

## CHANGING THE STRAP

If you feel like your watch needs a new look, simply change the strap!

---

- ① Press the pin inwards
- ② Change the wristband
- ③ Click the pin back in the holes



## CARE INSTRUCTIONS

A lot of love has gone into the creation of your watch. Here are some tips to keep it in shape.

---

We've made sure that your watch is water resistant up to 5 ATM. This means that it's well-protected from small splashes of water, but we wouldn't recommend deep-sea diving. If the battery runs out of power, your trusted jeweler or watchmaker can easily replace it for you. Our natural leather straps may change their appearance over time and develop a unique patina.

Specks of dust can easily be wiped away with a damp cloth. However, we recommend avoiding getting the strap too wet. Our straps made from stainless steel are resistant to the effects of humidity.

## TECHNICAL DETAILS

We only use the best components and materials for the Octamoon, including:

---

**Movement:** Japanese manufacturer Miyota

**Caliber:** Quartz Caliber 6P20 (With date and weekday)  
Quartz Caliber 6P24 (Without date and weekday)

**Case Material:** 316L Surgical steel

**Glass:** Sapphire-hardened mineral Glass

**Water resistance:** 5 ATM

## WARRANTY

We want to make you feel confident with your new watch.

---

From the date of purchase, you have a 24-month warranty for any and all material and manufacturing defects. If you have a warranty claim, please contact our Customer Service. Of course, this is not a free ticket. We can't do anything for damage you cause. That's the deal, right?



## RECYCLING & DISPOSAL

### And when its time is up?

---

Used electrical appliances and batteries must not be disposed of in private household waste but must be handed in at authorized collection depots. This way, you ensure environmentally-friendly disposal and recycling of all parts. Thank you for caring!



WEEE-Reg.-Nr.  
DE 24378860

## ADDRESS

---

**Lilienthal Lifestyle GmbH**  
Boxhagener Straße 78  
10245 Berlin Germany

<https://www.lilienthal.berlin/en>

<https://www.lilienthal.berlin/uk>

<https://lilienthal-berlin.com>



LILIENTHAL BERLIN