

USER INSTRUCTIONS



Octachrono



LILIENTHAL BERLIN

EN

For demonstration purposes in this instruction manual, we use images of the Blue Orange edition.

TABLE OF CONTENTS

EN ENGLISH

Introduction	04
The Octachrono	05
Setting the time and date	06
Simple timer function	08
Accumulated-time measurement	06
Manual reset	10
The 24-hour display	12
Technical details	14
Changing the strap	15
Care instructions	16
Warranty	17
Recycling and Disposal	18
Contact	19

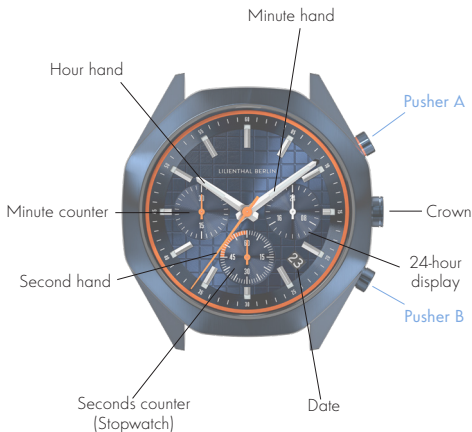
INTRODUCTION

Technical and functional – stay on track with your new Octachrono!

The Octachrono is a fascinating timepiece. Functional, playful, and precise to a second. With two pushers and a crown, the technically complex mechanism is easy to use. And with these instructions, you'll learn how and when to press them!

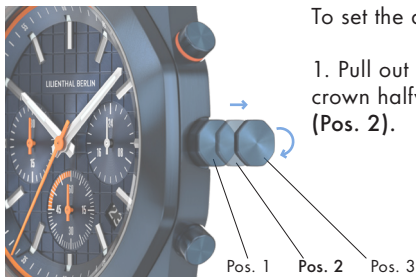
THE OCTACHRONO

Your new watch is full of intricate details. But first, an overview!



SETTING THE DATE AND TIME

Everything starts with the right setting. And for that, you only need the crown!



To set the date:

1. Pull out the crown halfway (Pos. 2).

2. Turn the crown clockwise until the correct date is displayed.

Please note: Do not set the date between 9:00 PM and 01:00 AM, as it may not switch correctly to the next day.



To set the time:

1. Pull out the crown (Pos. 3).

2. Turn the crown.

Pos. 1

Pos. 2

Pos. 3



Pos. 1

All good?
Then simply push
the crown back
into the case
(Pos. 1).

SIMPLE TIMER FUNCTION

Easily measure a time with just two presses of a pusher.



The timer function is operated by the two pushers: **Pusher A** and **Pusher B**.

Pusher A controls START (1) and STOP (2).
Pusher B resets the timer function (3).

ACCUMULATED-TIME MEASUREMENT

You can pause and resume the timer function as often as you need.



Pusher A starts and stops the time measurements. This can be done as many times as you like in a row (1) - (4).

Pusher B resets the timer function (5).

MANUAL RESET

Should the timer function hands not return to the zero position, you can reset them yourself.



Pull the crown all the way out (1) and then press and hold **pusher A** to move the stopwatch second hand forwards or **pusher B** to move it backwards (2).



The stopwatch second hand can also be moved forwards or backwards quickly by briefly pressing **pusher A** or **B** several times. The minute hand of the stopwatch is synchronized with the second hand of the stopwatch.

(3) When both hands are set to 0, reset the time and push the crown back into the case.

THE 24-HOUR DISPLAY

As we all know, the day consists of 24 hours. The Octachrono reflects each and every one of them.

The 24-hour display runs concurrently with the main hour hand, indicating the time from 12 p.m. to 12 a.m. When the hand is at the bottom, it's exactly 12 noon. This way, you always have the entire day at a glance.

TECHNICAL DETAILS

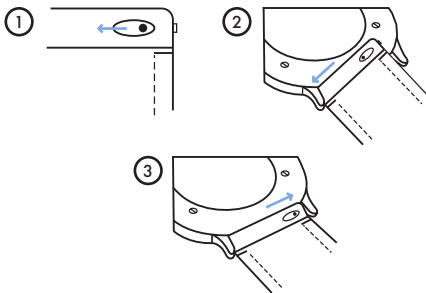
We only use the best components and materials for the Octachrono, including:

Movement:	Japanese manufacturer Miyota
Caliber:	Cal. JS25-00
Case Material:	316L Surgical steel
Case size:	40 mm
Glass:	Sapphire-hardened mineral glass
Water resistance:	5 ATM

CHANGING THE STRAP

If you feel like your watch needs a new look, simply change the strap!

To change the strap, press the small pin inwards (1). Remove the strap from the case (2). Replace with a new strap by clicking the pin back into the holes in the case (3).



CARE INSTRUCTIONS

The Octachrono: technically complicated but easy to maintain.

This watch can accompany you almost anywhere, though we wouldn't recommend going deep-sea diving with it. With a water resistance of 5 ATM it's protected from any water splashes or sprays. If the battery loses its power, simply take the watch to your trusted jeweler or watchmaker. They can easily replace the battery in a matter of minutes!

Our leather straps are natural products. For this reason, their appearance may change over time and may develop a delicate patina – making them truly unique items! Specks of dust can be easily removed with a damp cloth but avoid getting the strap too wet.

Our straps made from stainless steel are resistant to rusting in humid conditions.

WARRANTY

We want to make you feel confident with your new watch.

This watch comes with a warranty of 24 months. Should there be any issues with the product during this time, it's best that you directly contact our customer service team. We'll take care of it quickly, so that you can continue to enjoy the best of times!

RECYCLING AND DISPOSAL

Here you can find out what to do when it's time is up.

Used electrical appliances and batteries must not be disposed of in private household waste but must be handed in at authorized collection depots. This way, you ensure environmentally-friendly disposal and recycling of all parts. Thank you for caring!



WEEE-Reg.-Nr.
DE 24378860

EN 17

ADDRESS

Lilienthal Lifestyle GmbH
Boxhagener Straße 78
10245 Berlin Germany

<https://www.lilienthal.berlin/en>

<https://www.lilienthal.berlin/uk>

<https://lilienthal-berlin.com>



LILIENTHAL BERLIN