

**HERE SHE IS!** Your new muse from Berlin:  
Brash, exquisitely cultured and  
always on the cutting edge.

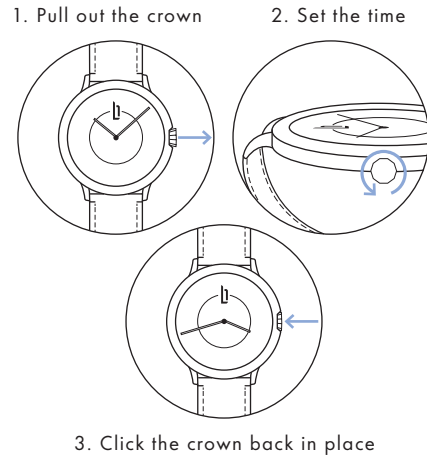
---

Here she is. Your new watch. A unique declaration  
of love to the urban feeling. With all of its stories,  
analogies and exclusive details. And in terms of  
sustainability, it is at the forefront. In short: Berlin  
on your wrist.

A. **GETTING TO KNOW  
EACH OTHER**

**SETTING THE  
TIME** Playing around on the first date  
is the new kissing. Don't be shy.  
It's what you both want.

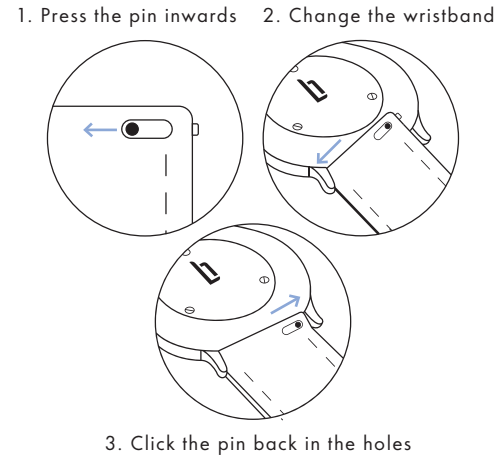
---



B. **DON'T HESITATE**

**SWAPPING  
WRISTBANDS** Commitment issues? Why not try  
something else? No problem with  
our changeable wristbands.

---



C. **CHANGE IT UP**

**CHARGE** All we really need is a little  
sunshine every once in a while  
to be happy.

---

The solar panel on this watch stores and converts  
light into energy. Simply expose the watch to bright  
light and its movement springs into action. It takes  
about four hours to fully charge this watch when it is  
worn in the sun. Artificial light also works but takes  
longer. Do not place the watch too close to a light  
source as this can cause overheating and damage.  
A full charge lasts for around four months. If you  
wear the watch regularly you'll never really have  
to worry about charging it.

This watch is also extremely easy to maintain. It is  
water-resistant up to 5 atm, which means you only  
need to take it off before showering, swimming,  
or underwater diving. What's more, stains on the  
strap are easily removed with a slightly damp cloth.

D. **GO OUT MORE  
OFTEN**



LILIENTHAL BERLIN

#### ADDRESS

Lilienthal Lifestyle GmbH  
Boxhagener Str. 78  
10245 Berlin, Germany

[www.lilienthal.berlin](http://www.lilienthal.berlin)

**GUARANTEE** From the date of purchase, you have a 24-month warranty for any and all material and manufacturing defects. If you have a warranty claim, please contact our Customer Service. Of course, this is not a free ticket. We can't do anything for damage you cause. That's the deal, right?

#### RECYCLING & DISPOSAL



WEEE-Reg.-Nr.  
DE 24378860

And when its time is up? Used electrical appliances and batteries must not be disposed of in private household waste but must be handed in at authorized collection depots. This way, you ensure environmentally-friendly disposal and recycling of all parts. Thank you for caring!

#### INSTRUCTIONS

4 steps towards  
the perfect relationship