

ZEITGEIST
AUTOMATIK
腕表

轻缓从容。先了解彼此，再慢慢建立亲密关系！

Zeitgeist是一款自动机械腕表。因此，它的滴答声略微有些不同。但是只要稍加关爱和呵护，没有什么能够阻碍您与它建立一段美好的关系。

这款腕表的中心是由螺丝、齿轮和弹簧组成的精密结构，通过机械能实现时间显示功能。机芯具有稳妥的保护设计，因此无需过多呵护。不过，有几点重要的地方需要您注意。

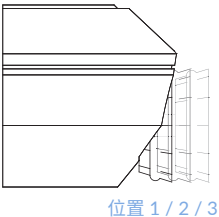
所以，花点时间来互相了解吧！

A.内在才是最重要的

表冠

您可以借助表冠，触及ZEITGEIST 最为精密的部件！

有了这款内嵌式表冠，您就可以轻松操作您的Zeitgeist。我们建议您操作表冠前，先将腕表从手腕上取下来。三个位置对应三种不同的功能：（位置1，在表壳内）给发条上弦；（位置2，拉出到中间位置）选择日期；（位置3，完全拉出）设置时间。

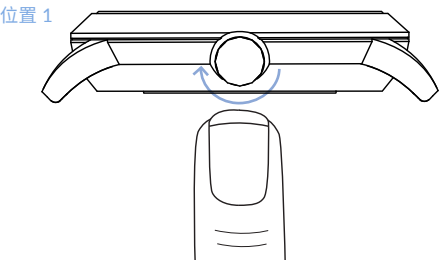


B.触及内核

给发条上弦

您的主动性是关键：完全由您来启动一切运转！

如果Zeitgeist停止运行，确保表冠处于位置1，然后从下面顺时针旋转表冠。通过这种方式为腕表的发条上弦。注意：只有腕表没电时，该操作才有效果。



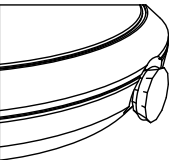
C.扭一扭，轻松搞定

时间和日期

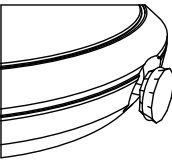
该设置需要准确无误。操作很简单。您只需要了解几个事实即可。

设置日期时，将嵌入式表冠拉出到位置2，轻轻扭动表冠，直到显示正确的数字。设置时间时，将表冠拉出到位置3，然后旋转表冠。设置完毕后，将表冠按入表壳。

位置 2



位置 3

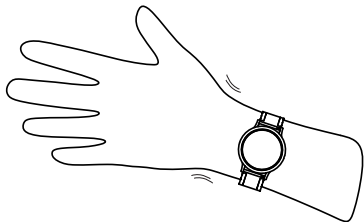


D.轻松准确地掌握时间

动力储备

一旦腕表开始运行，就会消耗动力。但是稍微运动一下，对其并没有妨害……

这款Zeitgeist拥有38小时的动力储备。这是它可以自己运行的时长。当您将其佩戴在手腕上时，您在活动过程中产生的动能可以为其提供动力。如果这款Zeitgeist停止运行，只需重新为其发条上弦即可。

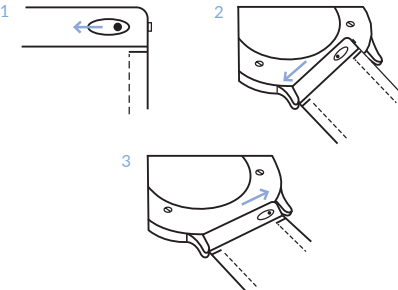


E.保持运行

更换表带

渴望一些改变？没问题，我们的可互换表带正是为这一需求而生！

更换表带时，向内按动连接销，以松开表带(1)。然后可以移除表带(2)。装上新表带，将连接销重新扣回小孔中(3)。



F.今夜，尝试一下不同的腕表风格

技术参数	我们本着优中选优的匠心精神，成就了这款 ZEITGEIST 的卓越品质。
机芯：	瑞士自动Sellita SW200机芯，搭载特别装饰的炭黑色摆陀
复杂功能：	日期
动力储备：	38 小时
表壳尺寸：	42,5 毫米
表壳厚度：	10 毫米
表壳材料：	316L 不锈钢，搭载螺旋连接表背展示窗口
表盘：	镀锌强力夜光涂层指针
表镜：	蓝宝石玻璃
重量：	77 克
防水性能：	50米
生产国家：	德国



保养说明
ZEITGEIST 时刻在您身边。请您好好照顾它，回报这一份陪伴。

316L 不锈钢和蓝宝石玻璃（只有钻石才能留下刮痕！）是为您的Zeitgeist提供有效保护的关键，但是我们建议也要注意避开过大的外力。

在给腕表发条上弦或者调节设置时，建议将其从手腕上取下来再操作，避免出现错误。如果您有段时间不想佩戴腕表，仍然需要不时移动它。此举有助于自动机芯保持运行。

这款Zeitgeist具有50米防水性能，但是我们建议您在洗浴时取下腕表，因为我们应该避免浸湿它的天然皮革表带。

干布或湿布可以轻松擦除灰尘和其他较轻的污渍。



LILIENTHAL BERLIN

质量保证

自购买之日起，在产品材料和制造缺陷方面，您享有24个月的质保服务。如果您有保修索赔需求，请联系我们的客户服务部门。当然，这并非相当于一张空白支票：您自己对Zeitgeist腕表造成的损害不在质保范围内.....

联系方式

有问题？需要帮助？或者只是想简单地沟通？没问题，我们随时都在！



service@lilienthal-berlin.hk
(852) 3955 7500
<https://apac.lilienthal.berlin/>

说明

我们的简单关系建立指南

**THE “ZEITGEIST
AUTOMATIK”** **Take things slow. Get to know
each other before getting
intimate!**

Your “Zeitgeist” is an automatic watch. Therefore, it ticks a little differently. But with the correct care and attention, nothing stands in the way of a great relationship.

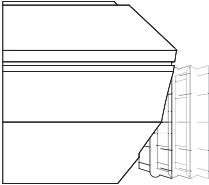
At the heart of the watch, there is a delicate construct of screws, cogs and springs that displays the time through the power of mechanical energy. This movement is well protected and doesn't require too much care. You should, however, know a couple of important things.

So take some time and get to know each other!

A. **IT'S THE INSIDE
THAT COUNTS**

THE CROWN **With the crown you can touch
the most delicate parts of the
“Zeitgeist”!**

The embedded crown is all that is needed to operate the “Zeitgeist”. We recommend that you take the watch off before you operate the crown. It has three positions that perform different functions: (1, in the case) to wind the watch up; (2, pulled out halfway) to select the date; (3, pulled out completely) to set the time.

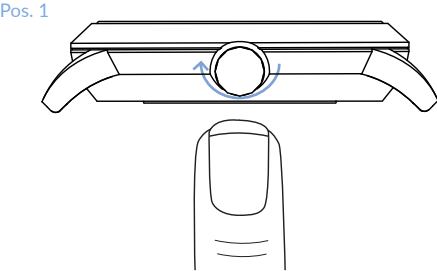


Pos. 1 / 2 / 3

B. **TOUCH
THE HEART**

WINDING UP **Your initiative is required: It's
up to you to set everything in
motion!**

If the “Zeitgeist” stops moving, carefully turn the crown clockwise from below while it's in position 1. This re-tightens the winder spring. Attention: this only works when the watch is out of power.

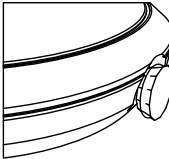


C. **IT JUST TAKES
A LITTLE TWIST**

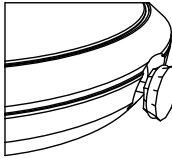
**TIME
AND DATE** **The settings have to be right. It's as
simple as that. You just need a bit
of tact.**

To set the date, pull the embedded crown out to position 2 and gently twist until the correct number is displayed. To set the time, rotate the crown while in position 3. Then push the crown back into the case.

Pos. 2



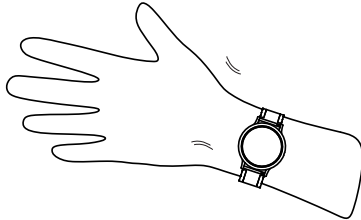
Pos. 3



D. **IT'S ALL ABOUT
THE TIMING**

**POWER
RESERVE** **Once it's running, it's running.
But a bit of movement doesn't
hurt either...**

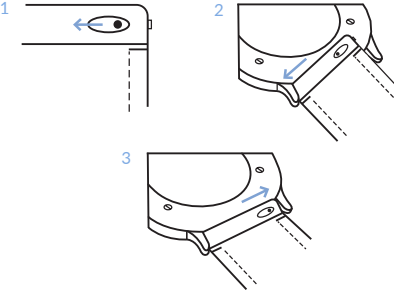
The “Zeitgeist” has a power reserve of 38 hours. That's how long it will run all by itself. When you are wearing it, it is powered by the kinetic energy from your movement. If the “Zeitgeist” stops moving, simply wind it up again.



E. **DON'T STOP
MOVING**

**SWAPPING
STRAPS** **Looking for some variety?
No problem, that's what our
interchangeable straps are for!**

To change the strap, press the pin inwards to release it (1). The strap can then be removed (2). To re-attach it, click the pin back into the pin holes (3).



F. **TRY SOMETHING
NEW TONIGHT**

**TECHNICAL
DETAILS**

**Only the best of the best.
That's what makes the
"Zeitgeist" so exclusive.**

Movement:	Swiss automatic caliber SW200 by Sellita with a specially decorated black-anthracite rotor
Complication:	Date
Power reserve:	38 hours
Case size:	42,5 mm
Case thickness:	10 mm
Case material:	316L stainless steel with screwed-on exhibition case back
Dial:	Galvanized Superluminova-coated hands
Glass:	Sapphire glass
Weight:	77 grams
Water resistance:	5 ATM
Production :	Made in Germany



**CARE
INSTRUCTIONS**

**The "Zeitgeist" is always there
for you. Return the favour and
take good care of it.**

316L stainless steel and sapphire glass (that can only be scratched by a diamond!) are instrumental in protecting your "Zeitgeist" – but avoiding excessive force is also advised.

To prevent erroneous operation of the watch, you should take it off before winding or adjusting it. If you don't want to wear the watch for a while, you should still move it every now and then. This will keep the automatic movement in motion.

Although the "Zeitgeist" is waterproof up to 5 ATM, we recommend you take it off before taking a shower or a bath as the natural leather strap shouldn't get wet.

Dust and other light stains are best removed with a dry or damp piece of cloth.



LILIENTHAL BERLIN

WARRANTY

From the date of purchase you are entitled to a warranty of 24 months that is valid for material and manufacturing defects. In the case of a warranty claim, please contact our customer service department. Naturally, that is not a blank cheque: self-induced damage of your "Zeitgeist" is not covered...

CONTACT

Have a question? Need some help?
Or just want to talk? No problem,
we're here for you!



service@lilienthal-berlin.hk
(852) 3955 7500
<https://apac.lilienthal.berlin/>

INSTRUCTIONS

Our little
relationship guide