

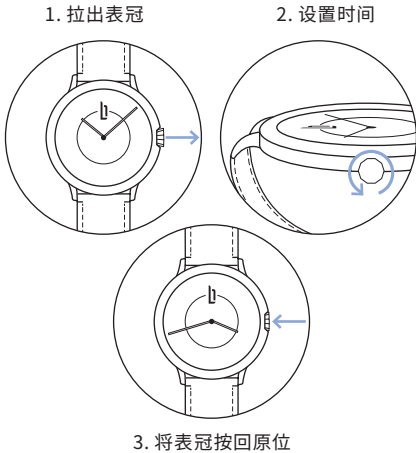
她来了！
她是来自德国柏林的新缪斯女神：
她闪亮耀眼，精致迷人，品味独到，
始终傲立于潮流最前沿。

她来了。您的新款腕表。以别具一格的方式宣告对繁华都市的热爱。承载精彩传奇故事，富含深意，蕴藏精妙细节。更在可持续发展领域树立全新标杆。简而言之，将柏林意韵荟萃于手腕之间。

对我们而言，“德国制造”远非简单的标签。更是我们对品质作出的承诺。正是出于这一原因，我们仅选用优质材料，携手精心甄选的德国合作伙伴制造我们的腕表。

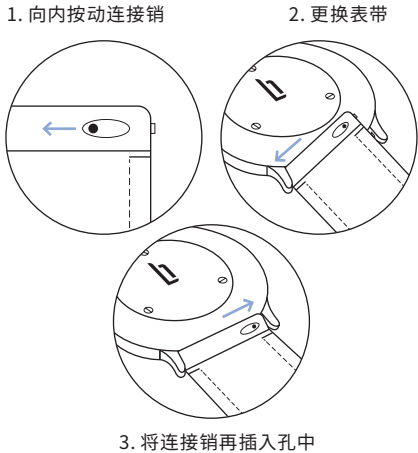
A. 知己知彼

设置时间
初次见面，对第一次亲密接触跃跃欲试。不要害羞。难道您们彼此不心动吗？



B. 不要犹豫，大胆表白

更换表带
承诺也会改变？为何不做些新的尝试？我们的可更换表带让您随心所欲。



C. 焕然一新

保养说明
这款腕表是凝聚真挚爱意的心血结晶。以下是令腕表持久如新的保养说明。

这款腕表防水性能为50米。因此，腕表可承受各种飞溅的小水花，但不建议佩戴腕表至深海潜水。

电池用罄时，可交由值得信赖的珠宝商或钟表商轻松更换新电池。

天然皮革表带会随着时间的流逝出现些许变化，呈现独特的古雅光泽。可以使用湿布轻松擦除沾染的灰尘。但建议不要令表带过度受潮。

不锈钢网格表带在潮湿环境中不会锈蚀。

还有其它问题？请翻至下一页，了解更多信息！

D. 开心获得，用心呵护



联系方式

Zeitgeist Asia Limited
香港铜锣湾勿地臣街1号
时代广场一期32楼3206室

service@lilienthal-berlin.hk
(852) 3955 7500
<https://apac.lilienthal.berlin/>

质量保证

自购买之日起, 可享为期24个月的质保服务, 此质保涵盖产品的任何材料问题和制造缺陷。如需报修索赔, 请联系我们的顾客服务团队。但享受质保服务并不意味着完全免费, 由于您个人原因导致腕表损坏, 我们将不承担任何责任。合情合理, 不是吗?

回收和处置



这款腕表的使用寿命结束后应该如何处置?
废旧电器和电池必须由专门的回收站进行回收。请确保以环保的方式处置和回收所有零部件。感谢您心系环保!

说明

达成完美关系的4个步骤

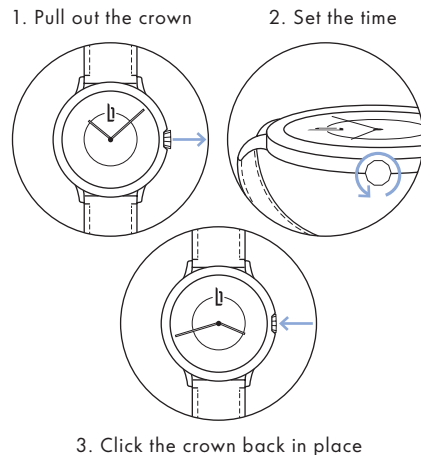
HERE SHE IS! Your new muse from Berlin:
Brash, exquisitely cultured and
always on the cutting edge.

Here she is. Your new watch. A unique declaration
of love to the urban feeling. With all of its stories,
analogies and exclusive details. And in terms of
sustainability, it is at the forefront. In short: Berlin on
your wrist.

For us, "Made in Germany" is more than just a label.
It is our promise of quality. This is why we only use
high quality materials and manufacture our watches
in collaboration with selected partners in Germany.

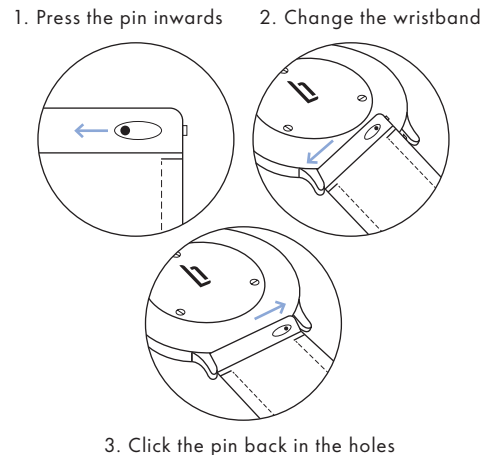
A. **GETTING TO KNOW
EACH OTHER**

SETTING THE
TIME Playing around on the first date
is the new kissing. Don't be shy.
It's what you both want.



B. **DON'T HESITATE**

SWAPPING
WRISTBANDS Commitment issues? Why not try
something else? No problem with
our changeable wristbands.



C. **CHANGE IT UP**

CARE
INSTRUCTIONS A lot of love has gone into the
creation of your watch. Here are
some tips to keep it in shape.

We've made sure that your watch is water resistant up
to 5 ATM. This means that it's well-protected from small
splashes of water, but we wouldn't recommend deep-
sea diving.

If the battery runs out of power, your trusted jeweler or
watchmaker can easily replace it for you.

Our natural leather straps may change their appearance
over time and develop a unique patina. Specks of dust
can easily be wiped away with a damp cloth. However,
we recommend avoiding getting the strap too wet.

Our mesh straps made from stainless steel are resistant
to the effects of humidity.

Further questions? Please turn the page!

D. **GIVE AND TAKE**



LILIENTHAL BERLIN

CONTACT

Zeitgeist Asia Limited
Unit 3206, 32/F, Tower One
Times Square, 1 Matheson Street
Causeway Bay, Hong Kong

service@lilienthal-berlin.hk
(852) 3955 7500
<https://apac.lilienthal.berlin/>

GUARANTEE

From the date of purchase, you have a 24-month warranty for any and all material and manufacturing defects. If you have a warranty claim, please contact our Customer Service. Of course, this is not a free ticket. We can't do anything for damage you cause. That's the deal, right?

RECYCLING & DISPOSAL



And when its time is up?
Used electrical appliances and batteries must be disposed at special collection depots. This way, you ensure environmentally-friendly disposal and recycling of all parts. Thank you for caring!

INSTRUCTIONS

4 steps towards
the perfect relationship