

THE NEOLUX
腕表

轻缓从容。先了解彼此，再慢慢建立亲密关系！

Neolux是一款自动机械腕表。因此，它的滴答声略微有些不同。但是只要稍加关爱和呵护，没有什么能够阻碍您与它建立一段美好的关系。

这款腕表的中心是由螺丝、齿轮和弹簧组成的精密结构，通过机械能实现时间显示功能。机芯具有稳妥的保护设计，因此无需过多呵护。

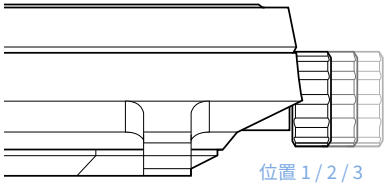
不过，有几点重要的地方需要您注意。

A. **内在才是最重要的**

表冠

您可以借助表冠，触及NEOLUX 最为精密的部件！

通过表冠即可操作Neolux。我们建议您在操作表冠之前先将手表摘下。
表冠有三个位置，分别执行不同的功能：
1（在表壳内）上弦；
2（拉出一半）选择日期；
3（完全拉出）设定时间。



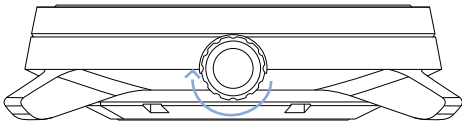
B. **触及内核**

给发条上弦

您的主动性是关键：完全由您来启动一切运转！

当Neolux手表停止走动时，只需将表冠调至位置1，并小心地顺时针旋转。转动大约40圈后，上弦弹簧会重新绷紧，让手表恢复运作。

位置 1



C. **扭一扭，轻松搞定**

时间、日期和星期

设置必须精准无误。操作简单明了，只需一点技巧。

要设置时间，将表冠拉出至位置3并旋转。

要设置日期，将表冠拉出至位置2，然后轻轻逆时针旋转，直至显示准确的日期。

如果您的手表还能显示星期，也可以通过位置2来设置。此时，顺时针转动表冠，直到显示正确的星期。

请注意：不建议在晚上21:00至凌晨01:00之间调整日期，因为这可能会导致第二天日期显示不正确。同样地，不建议在凌晨01:00至04:30之间调整星期显示。

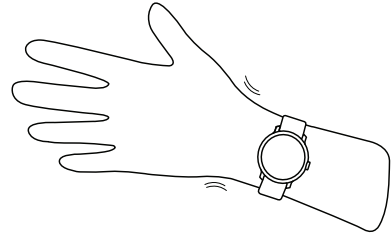
调整完毕后，记得将表冠推回至表壳内。

D. **轻松准确地掌握时间**

动力储备

一旦腕表开始运行，就会消耗动力。但是稍微运动一下，对其并没有妨害……

这款Neolux拥有42小时的动力储备。这是它可以自己运行的时长。当您将其佩戴在手腕上时，您在活动过程中产生的动能可以为其提供动力。如果这款Neolux停止运行，只需重新为其发条上弦即可。

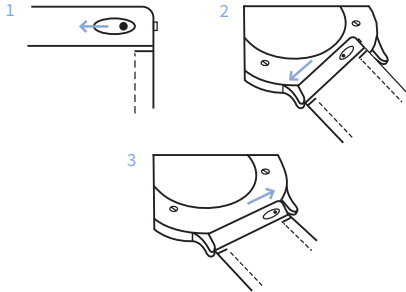


E. **保持运行**

更换表带

渴望一些改变？没问题，我们的可互换表带正是为这一需求而生！

更换表带时，向内按动连接销，以松开表带(1)。然后可以移除表带(2)。装上新表带，将连接销重新扣回小孔中(3)。



F. **今夜，尝试一下不同的腕表风格**

技术参数

我们本着优中选优的匠心精神，成就了这款 NEOLUX 的卓越品质。

保养说明

NEOLUX 时刻在您身边。请您好好照顾它，回报这一份陪伴。

机芯：

Miyota 日本自动机芯

复杂功能：

时间/日期与星期显示

动力储备：

42 小时

表壳尺寸：

42 毫米

表壳厚度：

11,5 毫米

表壳材料：

316L不锈钢，配有螺丝固定的透视底盖

表镜：

蓝宝石强化矿物玻璃

防水性能：

50米

生产国家：

德国

316L不锈钢和蓝宝石强化矿物玻璃可以很好地保护 Neolux，但也建议您避免过度用力。

在给腕表发条上弦或者调节设置时，建议将其从手腕上取下来再操作，避免出现错误。如果您有段时间不想佩戴腕表，仍然需要不时移动它。此举有助于自动机芯保持运行。

虽然Neolux防水性能高达5 ATM，但我们建议您在淋浴或泡澡前将其摘下。

干布或湿布可以轻松擦除灰尘和其他较轻的污渍。

质量保证

自购买之日起，在产品材料和制造缺陷方面，您享有24 个月的质保服务。如果您有保修索赔需求，请联系我们的客户服务部门。当然，这并非相当于一张空白支票：您自己对Neolux腕表造成的损害不在质保范围内.....

联系方式

有问题？需要帮助？或者只是想简单地沟通？没问题，我们随时都在！

service@lilienthal-berlin.hk
(852) 3955 7500
https://apac.lilienthal.berlin/



LILIENTHAL BERLIN

说明

我们的简单关系建立指南

THE NEOLUX Take things slow. Get to know each other before getting intimate.

Your “Neolux” is an automatic watch. Therefore, it ticks a little differently. But with the correct care and attention, nothing stands in the way of a great relationship.

At the heart of the watch, there is a delicate construction of screws, cogs and springs that displays the time through the power of mechanical energy. This movement is well protected and doesn’t require too much care.

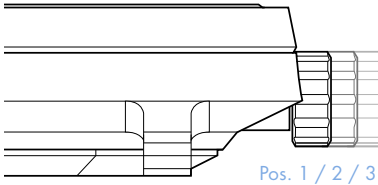
You should, however, know a couple of important things.

A. **IT’S THE INSIDE THAT COUNTS**

THE CROWN With the crown you can touch the most delicate parts of the “Neolux”.

The crown is all that is needed to operate the “Neolux”. We recommend that you take the watch off before you operate the crown. It has three positions that perform different functions:

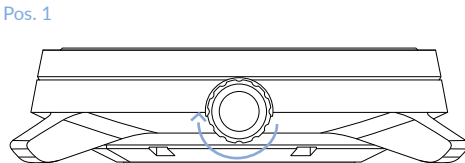
- 1 (in the case) to wind the watch up;
- 2 (pulled out half way) to select the date;
- 3 (pulled out completely) to set the time.



B. **TOUCH THE HEART**

WINDING UP Your initiative is required: It’s up to you to set everything in motion!

If the “Neolux” stops moving, carefully turn the crown clockwise while it’s in position 1. After approx. 40 turns the winding spring is re-tightened and the watch runs again.



C. **IT JUST TAKES A LITTLE TWIST**

TIME, DATE AND WEEKDAY The settings have to be just right. It’s as simple as that. You just need a bit of tact.

To set the time, rotate the crown while in position 3.

To set the date, pull the crown out to position 2 and gently twist counterclockwise until the correct number is displayed.

If you have an additional display for the weekday, you can also set this via position 2. This time, twist the crown clockwise until the correct weekday is displayed.

Please note: It is not recommended to set the date between the hours of 21:00 and 01:00, otherwise it may not change correctly the next day. It is also not recommended to set the weekday between the hours of 01:00 and 04:30.

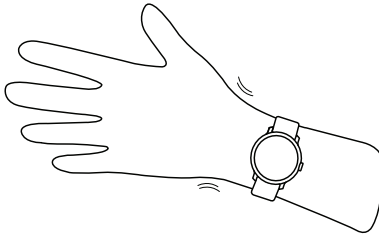
Then push the crown back into the case.

D. **IT’S ALL ABOUT THE TIMING**

POWER RESERVE Once it is running, it’s running. But a bit of motion doesn’t hurt either...

The “Neolux” has a power reserve of 42 hours. That’s how long it will run all by itself. When you are wearing it, it is powered by the kinetic energy from your movement.

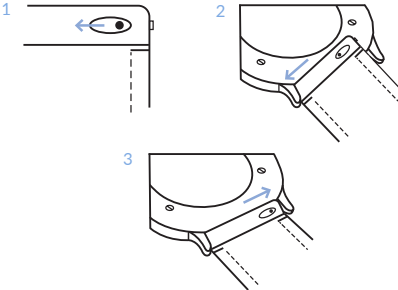
If the “Neolux” stops moving, simply wind it up again.



E. **DON’T STOP MOVING**

SWAPPING STRAPS Looking for some variety? No problem, that’s what our interchangeable straps are for!

To change the strap, press the pin inwards to release it (1). The strap can then be removed (2). To re-attach it, click the pin back into the pin holes (3).



F. **TRY SOMETHING NEW TONIGHT**

**TECHNICAL
DETAILS**

**Only the best of the best.
That's what makes the "Neo-
lux" so exclusive.**

Movement:	Japanese automatic caliber by Miyota
Complication:	Time / Date and Weekday
Power reserve:	42 hours
Case size:	42 mm
Case thickness:	11,5 mm
Case material:	316L stainless steel with screwed-on exhibition case back
Glass:	Sapphire-hardened mineral glass
Water resistance:	5 ATM
Production:	Made in Germany

**CARE
INSTRUCTIONS**

**The "Neolux" is always there
for you. Return the favour and
take good care of it.**

316L stainless steel and sapphire-hardened mineral
glass are instrumental in protecting your "Neolux"
– but avoiding excessive force is also advised.

To prevent erroneous operation of the watch, you
should take it off before winding or adjusting it. If
you don't want to wear the watch for a while, you
should still move it every now and then. This will
keep the automatic movement in motion.

Although the "Neolux" is waterproof up to 5 ATM,
we recommend you take it off before taking a shower
or a bath.

Dust and other light stains are best removed with a
dry or damp piece of cloth.

WARRANTY From the date of purchase you are en-
titled to a warranty of 24 months that
is valid for material and manufactu-
ring defects. In the case of a warran-
ty claim, please contact our customer
service department. Naturally, that is
not a blank cheque: self-induced da-
mage of your "Neolux" is not covered...

CONTACT Have a question? Need some help?
Or just want to talk? No problem,
we're here for you!

service@lilienthal-berlin.hk
(852) 3955 7500
<https://apac.lilienthal.berlin/>



LILIENTHAL BERLIN

INSTRUCTIONS

Our little
relationship guide