

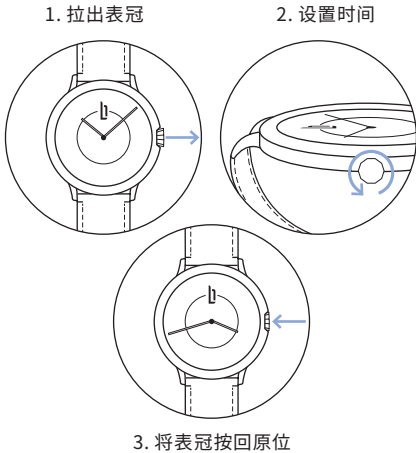
她来了！
她是来自德国柏林的新缪斯女神：
她闪亮耀眼，精致迷人，品味独到，
始终傲立于潮流最前沿。

她来了。您的新款腕表。以别具一格的方式宣告对繁华都市的热爱。承载精彩传奇故事，富含深意，蕴藏精妙细节。更在可持续发展领域树立全新标杆。简而言之，将柏林意韵荟萃于手腕之间。

对我们而言，“德国制造”远非简单的标签。更是我们对品质作出的承诺。正是出于这一原因，我们仅选用优质材料，携手精心甄选的德国合作伙伴制造我们的腕表。

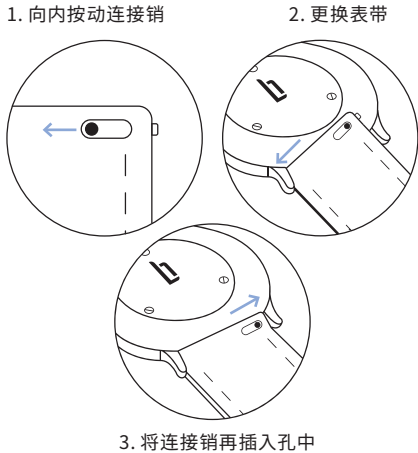
A. 知己知彼

设置时间
初次见面，对第一次亲密接触跃跃欲试。不要害羞。难道您们彼此不心动吗？



B. 不要犹豫，大胆表白

更换表带
承诺也会改变？为何不做些新的尝试？我们的可更换表带让您随心所欲。



C. 焕然一新

充电
偶尔一些阳光就会令我们心情明媚，开心不已。

这款腕表上的太阳能电池板可以储存光，并将其转化为能量。只需将腕表放在明亮的光线下，它的机芯就会开始运行。在阳光下，只需要四小时就可以给这款腕表充满电。在人造光下也可以充电，只是所需的时间略长一些。不要将腕表放在过于接近光源的地方，因为过高的热量会给腕表造成损害。每充满一次电后，腕表可以续航约四个月。如果您经常佩戴这款腕表，几乎根本不用担心充电问题。

这款腕表的保养方式也很简单。具有50米的防水性能，这意味着只有在洗浴、游泳或者潜水时才需要取下腕表。此外，略微浸湿的软布可以轻松擦除表带上的污渍。

D. 多出去走走



LILIENTHAL BERLIN

联系方式

Zeitgeist Asia Limited
香港铜锣湾勿地臣街1号
时代广场一期32楼3206室

service@lilienthal-berlin.hk
(852) 3955 7500
<https://apac.lilienthal.berlin/>

质量保证

自购买之日起，针对产品的任何材料问题和制造缺陷，您享有24个月的质保服务。如需报修索赔，请联系我们的客户服务团队。但享受质保服务并不意味着完全免费，由于您个人原因导致腕表损坏，我们将不承担任何责任。合情合理，不是吗？

回收和处置



这款腕表的使用寿命结束后应该如何处置？
废旧电器和电池必须由专门的回收站进行回收。请确保以环保的方式处置和回收所有零部件。感谢您心系环保！

说明

达成完美关系的4个步骤

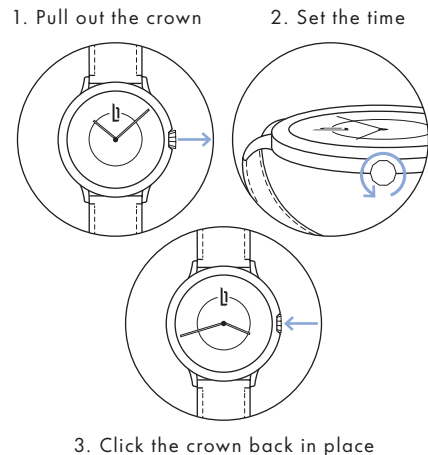
HERE SHE IS! Your new muse from Berlin:
Brash, exquisitely cultured and
always on the cutting edge.

Here she is. Your new watch. A unique declaration of love to the urban feeling. With all of its stories, analogies and exclusive details. And in terms of sustainability, it is at the forefront. In short: Berlin on your wrist.

For us, "Made in Germany" is more than just a label. It is our promise of quality. This is why we only use high quality materials and manufacture our watches in collaboration with selected partners in Germany.

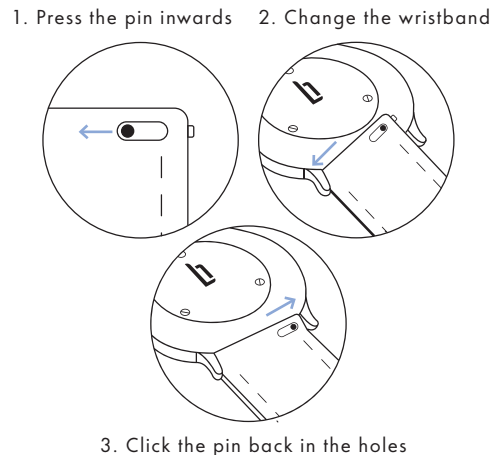
A. **GETTING TO KNOW
EACH OTHER**

**SETTING THE
TIME** Playing around on the first date
is the new kissing. Don't be shy.
It's what you both want.



B. **DON'T HESITATE**

**SWAPPING
WRISTBANDS** Commitment issues? Why not try
something else? No problem with
our changeable wristbands.



C. **CHANGE IT UP**

CHARGE All we really need is a little
sunshine every once in a while
to be happy.

The solar panel on this watch stores and converts light into energy. Simply expose the watch to bright light and its movement springs into action. It takes about four hours to fully charge this watch when it is worn in the sun. Artificial light also works but takes longer. Do not place the watch too close to a light source as this can cause overheating and damage. A full charge lasts for around four months. If you wear the watch regularly you'll never really have to worry about charging it.

This watch is also extremely easy to maintain. It is water-resistant up to 5 atm, which means you only need to take it off before showering, swimming, or underwater diving. What's more, stains on the strap are easily removed with a slightly damp cloth.

D. **GO OUT MORE
OFTEN**



LILIENTHAL BERLIN

CONTACT

Zeitgeist Asia Limited
Unit 3206, 32/F, Tower One
Times Square, 1 Matheson Street
Causeway Bay, Hong Kong

service@lilienthal-berlin.hk
(852) 3955 7500
<https://apac.lilienthal.berlin/>

GUARANTEE

From the date of purchase, you have a 24-month warranty for any and all material and manufacturing defects. If you have a warranty claim, please contact our Customer Service. Of course, this is not a free ticket. We can't do anything for damage you cause. That's the deal, right?

RECYCLING & DISPOSAL



WEEE-Reg.-Nr.
DE 24378860

And when its time is up?
Used electrical appliances and batteries must be disposed at special collection depots. This way, you ensure environmentally-friendly disposal and recycling of all parts. Thank you for caring!

INSTRUCTIONS

4 steps towards
the perfect relationship