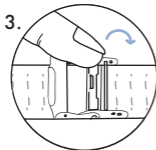
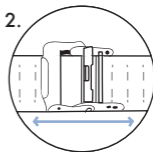


## 调整表带长度



将小尖头工具插入表扣上的方形小孔中，小心地向上撬动表扣，令表扣松开。

现在，您可以移出表扣。根据表带底部的凹槽，调整所需的长度。



确定所需的长度后，固定表扣。向下按压杠杆，直至其回到初始位置，即表示固定到位。

## 固定表带

将两个挂钩挂在表带另一端表扣装置的横杆上 (a)。向下按压表扣盖，直到听到“喀哒”扣合声 (b)，最后用较小的表扣盖将其固定 (c)。

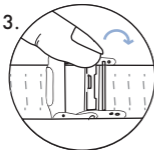
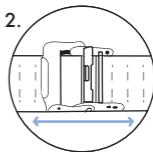


## ADJUSTING THE STRAP LENGTH



Place a small pointed tool into the little square hole on the clasp and loosen the clasp by carefully prying it upwards from the holder.

Now, you can move the clasp. Use the grooves on the underside of the strap until you find the desired length.



Once you have your desired length, secure the clasp. To do so, press down the lever until it snaps back into place in its original position.

## FASTENING THE STRAP

Attach the two hooks onto the bar of the clasp mechanism at the other end of your watch strap (a). Press the clasp cover down until you hear a click (b) and secure it with the smaller clasp cover piece (c).

