

# 顾客须知

## USER INSTRUCTIONS



计时码表  
Chronograph



LILIENTHAL BERLIN



在此使用说明中，我们以深银色配白色表款图片作为示例。

For demonstration purposes in this instruction manual, we use images of the Dark Silver & White edition.

# 目录| TABLE OF CONTENTS

---

## **CN** 中文

说明	01
计时码表	02
设置时间和日期	03
基本计时功能	05
计算累积时间	06
计算分段时间	07
手动调校	09
技术参数	11
更换表带	12
保养说明	13
质量保证	14
联系方式	15

## **EN** ENGLISH

Introduction	17
The Chronograph	18
Setting the time and date	19
Simple timer function	21
Accumulated-time measurement	22
Interval-time measurement	23
Manual reset	25
Technical details	27
Changing the strap	28
Care instructions	29
Warranty	30
Contact	31

## 说明

### 技术和功能 — 了解您的新计时码表！

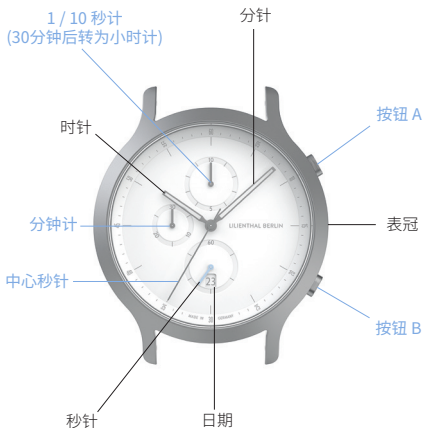
---

这款计时码表是一款令人着迷的時計。它功能卓越，设计有趣并可精确至十分之一秒。这款蕴含精密技术的腕表设有两个按钮和一个表冠，操作简单。请仔细阅读以下说明，了解按钮和表冠的使用方法和具体用途！

## 计时码表

您的新腕表蕴含各种精密细节。首先, 让我们大致了解一下!

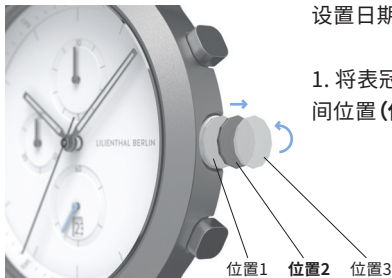
---



## 设置日期和时间

首先,从设置正确时间开始。仅需操控表冠就可以完成!

---

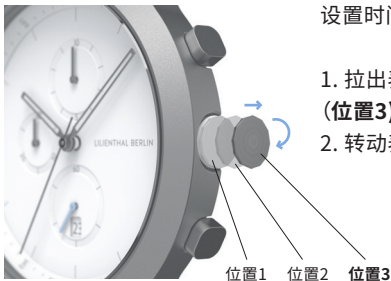


2. 逆时针方向转动表冠至正确日期。

**请注意:**不建议在 20:30 和 24:00 之间设置日期,因为在此时间段,机芯会自动切换日期。

设置时间：

1. 拉出表冠  
(位置3)。
2. 转动表冠。



之后呢？  
只需将表冠按入  
表壳即可  
(位置1)。



## 基本计时功能

只需按两次按钮,就可以轻松测量时间。

---



操作两个按钮实现计时功能：**按钮A**和**按钮B**。

**按钮A**控制“开始”(1)和“停止”(2)功能。

**按钮B**用于重置计时功能(3)。



## 计算累积时间

您可以按需要多次暂停和重启计时功能。

---



**按钮A**用于启动和暂停计算累积时间。您可以按照(1) - (4)的顺序,按需要重复该操作。

**按钮B**用于重置记时指针(5)。

## 计算分段时间

只需按一下按钮,就可以轻松计算分段时间及追时。

---



按一下**按钮A**开始计时(1),按一下**按钮B**指针停止(2)。记时器仍然在背后运行。



(3) 再按一下**按钮B**, 记时指针会迅速到达持续计算的时间并进行追时, 您可以按需要多次按动**按钮B**来继续计算分段时间。

(4) 按一下**按钮A**停止, 并显示最后的时间。

(5) 按一下**按钮B**还原, 记时指针返回零位置。

## 手动调校

如果记时指针未回到零位置，便需要手动调校。

---



将表冠拉到位置3 (1)。然后同时按住**按钮A**和**按钮B**至少2秒钟 (2)。中心秒针将回到修正模式。



(3) 选择重置。您可以先调校中心秒计。按**按钮B**，进入调校1/10秒计，再按一次进入调校分钟计。

(4) 短按**按钮A**，所选定的指针将单步前进。长按**按钮A**，指针将连续前进。

(5) 完成调校后，将表冠按回表壳即可。

## 技术参数

我们在计时码表中仅使用优质零部件和材料, 其中包括:

---

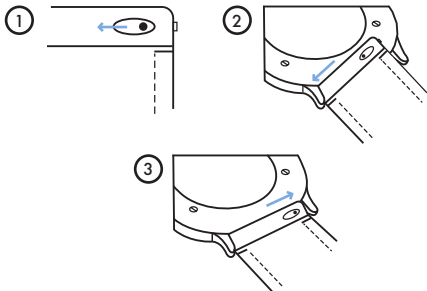
机芯:	瑞士制造商 Ronda
机芯型号:	石英 Startech Caliber 3540.D
表壳材质:	316L 不锈钢
表镜:	蓝宝石玻璃
防水性能:	50 米
生产国家:	德国

## 更换表带

如果您希望自己的腕表呈现新外观, 只需更换表带!

---

更换表带时, 向内按小连接销 **(1)**。从表壳上取下表带 **(2)**。更换表带, 并将连接销按回表壳的小孔中 **(3)**。



## 保养说明

计时码表：精密技术，操作简单。

---

这款腕表与您如影随形，但不建议在深海潜水时佩戴。腕表防水等级为50米，可抵御飞溅或喷洒的水花。电池用罄时，只需帶同腕表前往值得信赖的珠宝商或钟表商处。他们可以在几分钟内轻松为您更换新电池！

我们的皮革表带为天然产品。因此，其外观有可能会随着时间出现变化，呈现出雅致的光泽，形成真正独特的外观！可以使用湿布轻松擦除灰尘，但是要避免表带过度潮湿。

我们的不锈钢表带在潮湿环境中不会锈蚀。



## 质量保证

我们希望您对新腕表充满信心。

---

我们为这款腕表提供24个月的保修服务。在此期间，如果产品出现任何问题，最合适的解决办法是直接联系我们的顾客服务团队。我们会尽快解决问题，让您继续享受美好时光！

## 联系方式

有任何问题或想简单沟通一下？我们随时为您效劳！

---

service@lilienthal-berlin.hk

(852) 3955 7500

<https://apac.lilienthal.berlin/>

**Zeitgeist Asia Limited**

香港铜锣湾勿地臣街1号

时代广场一期32楼3206室





## INTRODUCTION

**Technical and functional – stay on track with your new Chronograph!**

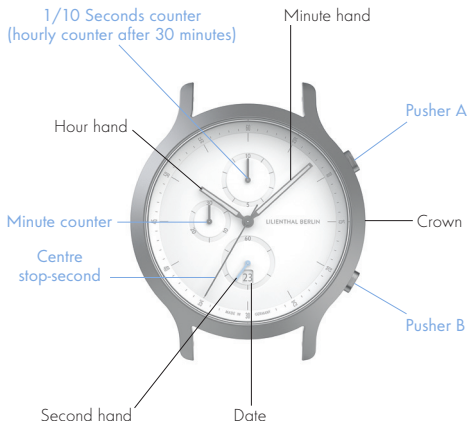
---

The Chronograph is a fascinating timepiece. Functional, playful, and precise to the tenth of a second. With two pushers and a crown, the technically complex mechanism is easy to use. And with these instructions, you'll learn how and when to press them!

## THE CHRONOGRAPH

Your new watch is full of intricate details. But first, an overview!

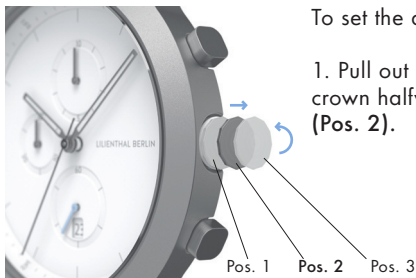
---



## SETTING THE DATE AND TIME

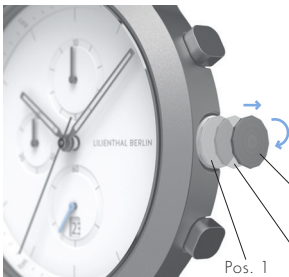
Everything starts with the right setting. And for that, you only need the crown!

---



2. Turn the crown counterclockwise until the correct date is displayed.

**Please note:** It is not recommended to set the date between the hours of 20:30 and 24:00, because during this period the date is automatically switched by the movement.



To set the time:

1. Pull out the crown (**Pos. 3**).

2. Turn the crown.

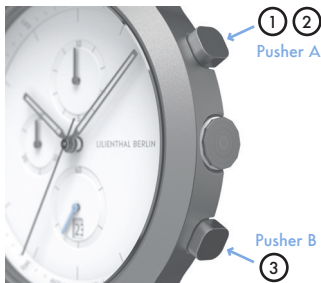


All good?  
Then simply push  
the crown back  
into the case  
(**Pos. 1**).

## SIMPLE TIMER FUNCTION

Easily measure a time with just two presses of a pusher.

---



The timer function is operated by the two pushers: **Pusher A** and **Pusher B**.

**Pusher A** controls START (1) and STOP (2).  
**Pusher B** resets the timer function (3).



## ACCUMULATED-TIME MEASUREMENT

You can pause and resume the timer function as often as you need.

---



**Pusher A** starts and stops the time measurements. This can be done as many times as you like in a row (1) - (4).

**Pusher B** resets the timer function (5).

## INTERVAL-TIME MEASUREMENT

Easily measure how much time has passed with the press of a button.

---



Press **Pusher A** to **START** the timer (1) and **STOP** it with **Pusher B** (2). Timing continues in the background.



(3) Another press on **Pusher B** fast-forwards the hands to the current measurement time. You can check the elapsed time with **Pusher B** as often as you like.

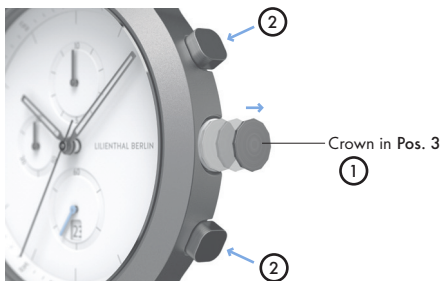
(4) To STOP the measurement press **Pusher A**.

(5) To reset the display to zero, press **Pusher B**.

## MANUAL RESET

Should the timer function hands not return to the zero position, you can reset them yourself.

---



Pull out the crown to **position 3 (1)**. Then press **Pusher A** and **Pusher B** **SIMULTANEOUSLY** for at least **2 seconds (2)**. The hands are now in reset mode.



(3) Choose the display you want to reset. The centre stop-second can be reset first. A press on **Pusher B** then leads you to the 1/10 seconds counter, and another press to the minute counter.

(4) Exert short presses on **Pusher A** and the hand of the selected display will move in single steps. Hold **Pusher A** for a continuous movement.

(5) When you are finished, push the crown back into the case.

## TECHNICAL DETAILS

We only use the best components and materials for the Chronograph, including:

---

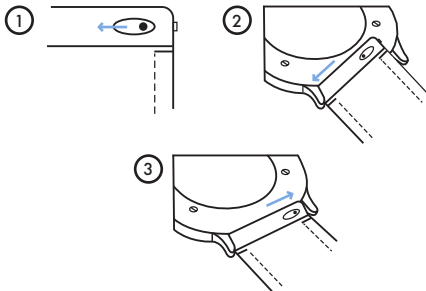
<b>Movement:</b>	Swiss manufacturer Ronda
<b>Caliber:</b>	Quarz Startech Caliber 3540.D
<b>Case Material:</b>	316L Surgical steel
<b>Glass:</b>	Sapphire-hardened mineral glass
<b>Water resistance:</b>	5 ATM
<b>Quality:</b>	Made in Germany

## CHANGING THE STRAP

If you feel like your watch needs a new look, simply change the strap!

---

To change the strap, press the small pin inwards (1). Remove the strap from the case (2). Replace with a new strap by clicking the pin back into the holes in the case (3).



## CARE INSTRUCTIONS

**The Chronograph: technically complicated but easy to maintain.**

---

This watch can accompany you almost anywhere, though we wouldn't recommend going deep-sea diving with it. With a water resistance of 5 ATM it's protected from any water splashes or sprays. If the battery loses its power, simply take the watch to your trusted jeweler or watchmaker. They can easily replace the battery in a matter of minutes!

Our leather straps are natural products. For this reason, their appearance may change over time and may develop a delicate patina – making them truly unique items! Specks of dust can be easily removed with a damp cloth but avoid getting the strap too wet.

Our straps made from stainless steel are resistant to rusting in humid conditions.



## WARRANTY

We want to make you feel confident with your new watch.

---

This watch comes with a warranty of 24 months. Should there be any issues with the product during this time, it's best that you directly contact our customer service team. We'll take care of it quickly, so that you can continue to enjoy the best of times!

## CONTACT

Have some questions or simply want a quick chat? We're here for you!

---

service@lilienthal-berlin.hk  
(852) 3955 7500  
<https://apac.lilienthal.berlin/>

**Zeitgeist Asia Limited**  
Unit 3206, 32/F, Tower One  
Times Square, 1 Matheson Street  
Causeway Bay, Hong Kong





LILIENTHAL BERLIN