

顾客须知

USER INSTRUCTIONS



太阳能计时码表
Chronograph
Solar



LILIENTHAL BERLIN



在这份说明书中,我们将
Chronograph Solar I 的图片用
于演示目的。

For demonstration purposes in
this instruction manual, we use
images of the Chronograph
Solar I.

目录| TABLE OF CONTENTS

CN 中文

一切尽在掌握	04
计时码表	05
设置时间和日期	06
给手表充电	08
检查剩余电量	09
基本的秒表功能	10
暂停和继续计时	11
计算分段时间	12
手动调校	14
技术参数	16
更换表带	17
注意事项	18
联系方式 - 质量保证	19

EN ENGLISH

All in your hands	20
The Chronograph	21
Setting time and date	22
Charging the watch	24
Checking reserve energy	25
Simple stopping	26
Pause and keep recording	27
Display time elapsed	28
Manuel reset	30
Technical specifications	32
Switching straps	33
Care tips	34
Contact - Warranty	35

一切尽在掌握

技术和功能 — 了解您的新计时码表！

您现在拥有的这款计时码表，是一件搭载复杂技术的设备。但是不要担心 — 两个按钮和一个表冠就可以帮助您轻松掌握计时码表上的多个时间。电量不足时，您只需要将其放在阳光中即可！

在这份说明书中，您可以找到有关这款新腕表的所有其他信息。

计时码表

您的新腕表蕴含各种精密细节。

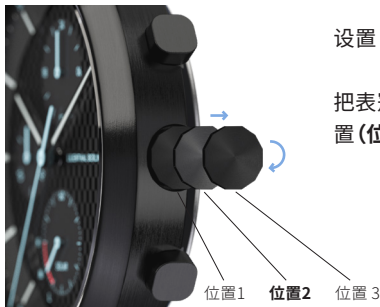
首先, 让我们大致了解一下!



设置时间和日期

一切都从正确的设置开始。

要做到这一点，您只需要调校表冠！



设置日期：

把表冠拉至中间位置 (位置2)。

现在扭动表冠至所需的日期。全部设置完毕后，只需将表冠按入表壳！（位置 1）

| 注意：如果时间设置在9点到1点之间，将会无效。



如果将表冠拉至最后位置(**位置3**), 您可以扭动表冠並设置时间。

位置1 位置2 **位置3**



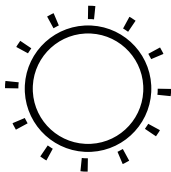
全部设置完毕后, 只需将表冠按回表壳!
(**位置1**)

位置1

给手表充电

可持续设计，无需电池：
给您的设备充电。

太阳能电池为计时码表提供能量。第一次佩戴之前，将这款表在一个光线明亮的地方放置一段时间。在阳光中放置 5 小时就可以给这款表充满电。它可以在没有光线充电的情况下运行 4 个月。在电灯下以及阴天时，充电需更长时间。每天戴着这款表在日光或者电灯光线下活动大约 4 小时，就足以确保手表持续运行。



检查剩余电量

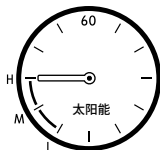
什么时候需要再次充电？

按一下按钮就知道了。

下方 6 点钟标识旁的显示功能也可以显示表的剩余电量。要想启动这个功能，只需长按按钮 B 一秒多即可。如果指针拨到刻度 H 上，则表示电量足以供这款表运行 90 天及更长的时间。如果拨到 M 上，表示可以运行 30-90 天，如果拨到 L 上，则表示剩余电量仅供运行不足 30 天。



← 按钮 B



基本的秒表功能

想记录一段时间？没有比这更简单的了
- 只需按两次按钮！



- (1) 按钮 A 开始测量。
- (2) 再按一次则停止测量。
- (3) 按钮 B 将秒表重置复位。

暂停和持续计时

您可以按照所需多次暂停和重启秒表功能



使用**按钮 A** 启动秒表功能，再按一次则停止。操作次数由您按照所需决定。(1) - (4)。

并按总累积计算时间显示

(5) **按钮 B** 可重置指针。

计算分段时间

在使用秒表功能时，您可以查看到中途已用时间



(1) 使用**按钮 A** 开始计时，**按钮 B** 停止计时(2)。计时器仍然在背后运行。



(3) 再按一下**按钮 B**, 记时指针会迅速到达持续计算的时间并进行追时, 您可以按需要多次按动**按钮 B** 来继续计算分段时间。

(4) 按一下**按钮 A** 停止, 并显示最后的时间。

(5) 按一下**按钮 B** 还原, 记时指针返回零位置。

手动调校

如果记时指针未回到零位置, 便需要手动调校。



(1) 将**表冠**拉出到所需位置。

(2) 同时短按两边按钮, 移动秒计指针。长按按钮, 指针会持续移动。



④ 表冠位于位置 1

(3) 长按按钮, 分钟计的指针便会复位: 分针将和秒针一起移动。

(4) 完成调校后, 将表冠按回表壳即可。

技术参数

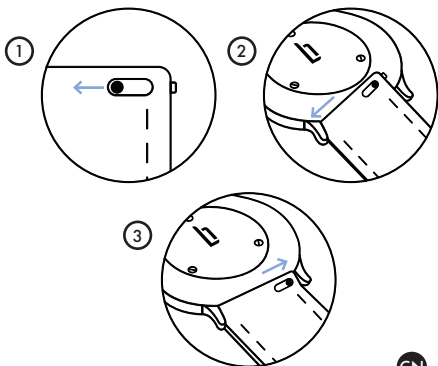
我们在计时码表中采用的是优质零部件。包括：

机芯：	爱普生太阳能机芯
机芯型号：	VR43B11
表壳材质：	316L 不锈钢
表壳尺寸：	42.5 毫米
表镜：	蓝宝石玻璃
防水性能：	50米

更换表带

如果您想把腕表改头换面，只需更换一下表带！

更换表带时，向内推动表带中的小连接销(1). 通过这种方式缩短连接轴，以便取下表带(2). 将连接销再向内推动，将连接轴放入表壳的小孔中，就可以重新固定好表带。(3).



注意事项

您的计时码表是一件精密的设备，但是保养方式十分简单！

它几乎可以陪伴您前往任何地方，不过如果您要前往深海潜水，需要将它取下来。50 米的防水等级可以抵御任何形式的水花飞溅。

在为腕表充电时，注意不要距离光源太近，50° C 以上的温度会损害机芯。

质量保证和联系方式

如果出现任何问题：

您在长达 24 个月的时间内可以获得我们提供的保修服务。在这期间，如果出现腕表材质或制造方面的问题，最恰当的做法是立即联系我们的顾客服务中心。我们会迅速处理相关问题，并且没有繁琐的程序，确保我们彼此都获得满意的结果！

service@lilienthal-berlin.hk
(852) 3955 7500
<https://apac.lilienthal.berlin/>



WEEE-Reg.-Nr.
DE 24378860

ALL IN YOUR HANDS

Technical and functional – stay on track with
your new Chronograph!

The Chronograph that you now call your own is a device that's packed with complex technology. But don't worry – two pushers and a crown are all you need to keep track of multiple times. And when it comes to keeping it powered, all you need is a little bit sunshine!

Everything else you need to know about your new watch can be found here in these instructions.

THE CHRONOGRAPH

Your new watch is full of intricate details.
But first, an overview!



SETTING TIME AND DATE

Everything starts with the right settings.
To do so, all you need is the crown!



To set the date:

select the middle
crown position
(pos. 2).

Now twist the crown to the desired date. Once you're all set, just push the crown back into the case! (pos. 1)

| Note: This will not work if the time is set between 9 and 1 o'clock.



If you pull the crown all the way out (pos. 3), you can also twist it to set the time.

Pos. 1

Pos. 2

Pos. 3



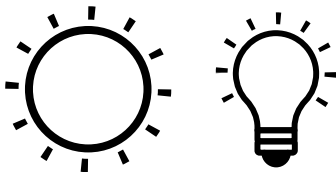
Once you're all set, just push the crown back into the case! (pos. 1)

Pos. 1

CHARGING THE WATCH

Sustainable, no batteries needed:
Powering your device.

The solar cell supplies the Chronograph with energy. Before wearing it for the first time, place the watch in a bright place for a while. About 5 hours in sunlight will fully charge the watch. It will then run for about 4 months without any further light. Charging in electric light or on a cloudy day takes longer. Wearing the watch in daylight or electric light for about 4 hours a day is enough to keep the Chronograph running constantly.



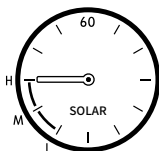
CHECKING RESERVE ENERGY

When is it time for a re-charge?
Find out with the push of a button.

The lower display near the 6 o'clock marker also shows you how much remaining power you have in the watch. To activate the display, simply hold down Pusher B for a little longer than one second. If the dial is on H, there's enough power for 90 days or more. M means that there's enough power for 30-90 days, and when the dial is on L, there's only enough power for fewer than 30 days.



← Pusher B



SIMPLE STOPPING

Want to record a time? Nothing could be easier
– just push two buttons!



- (1) **Pusher A** activates the stopwatch function and
- (2) stops it again.
- (3) **Pusher B** resets the chronograph hands.

PAUSE AND KEEP RECORDING

You can pause the stopwatch function and restart it as often as you like

Pusher A



Pusher B



Use **Pusher A** to activate the stopwatch function and stop it again. You can do this as many times as you like. (1) - (4).

The times will add up on the displays.

(5) **Pusher B** resets the hands.

DISPLAY TIME ELAPSED

You can check the time elapsed so far while the stopwatch is running



(1) Start the time with **Pusher A** and stop it with **Pusher B** (2). The time will continue to be recorded in the background.



(3) **Pusher B** makes the chronograph hands jump forward to the current time being recorded. You can view the time elapsed as often as you like by stopping with **Pusher B**.

(4) **Pusher A** then stops the time as usual.

(5) **Pusher B** resets the display back to 0.

MANUAL RESET

Should the timer function hands not return to the zero position, you can reset them yourself.



(1) Pull out the crown to position

(2) Use a pusher quickly to move the hand of the stopped seconds display. Hold a Pusher longer and the hand will move continuously.



← ④ Crown in **pos. 1**

(3) To return the hand of the stopped minutes display, just hold a pusher a little longer: The minute hand moves along with the second hand.

(4) When you are finished, push the crown back into the case.

TECHNICAL SPECIFICATIONS

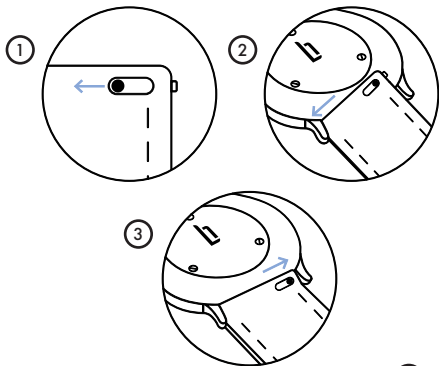
We use only the best components for your Chronograph. These are:

Movement:	Solar movement by Epson
Caliber:	VR43B11
Case Material:	316L surgical stainless steel
Case size:	42.5 millimeters
Glass:	Sapphire-hardened glass
Water resistance:	5 ATM

SWITCHING STRAPS

If you think your watch could use a new look,
just swap out the strap!

To change the strap, push the small pin in the strap inward (1). This shortens the bar, allowing you to remove the strap (2). To put it back in place, pull the pin back again and place the bar in the holes in the case (3).



CARE TIPS

Your Chronograph is a technically complex device, but quite easy to care for!

Your watch is good to go with you just about anywhere you like – though you'll want to remove it if you go deep sea diving. Still, with a water resistance of 5 ATM, it's well protected against splashes of any kind.

When charging your watch, be careful not to place it too close to the light source – temperatures over 50°C can damage the movement.

WARRANTY AND CONTACT

If any issues should arise:

You get a warranty of over 24 months from us. Should any problems with the materials or manufacturing arise during this time, the best thing to do is to contact our customer service directly. We'll then take care of it quickly and without any red tape so we can all walk away happy!

service@lilienthal-berlin.hk
(852) 3955 7500
<https://apac.lilienthal.berlin/>



WEEE-Reg.-Nr.
DE 24378860



LILIENTHAL BERLIN