

顾客须知

USER INSTRUCTIONS



Chrono Miles



LILIENTHAL BERLIN



目录 | TABLE OF CONTENTS

CN 中文

说明	04
Chrono Miles	05
设置时间和日期	06
基本计时功能	08
计算累积时间	09
手动调校	10
技术参数	12
更换表带	13
保养说明	14
质量保证	15
联系方式	16

EN ENGLISH

Introduction Chrono Miles	18
The Chrono Miles	19
Setting the time and date	20
Simple timer function	22
Accumulated-time measurement	23
Manual reset	24
Technical details	26
Changing the strap	27
Care instructions	28
Warranty	29
Contact	30

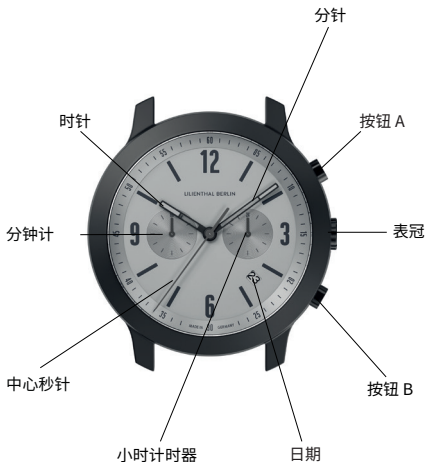
CHRONO MILES 说明

技术和功能——了解您的新计时码表！

CHRONO MILES是一款令人着迷的時計。它功能卓越，设计有趣，计时精准。这款蕴含精密技术的腕表设有两个按钮和一个表冠，操作简单。请仔细阅读以下说明，了解按钮和表冠的使用方法和具体用途！

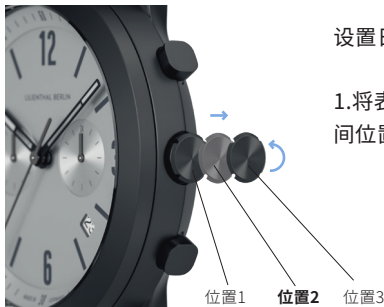
CHRONO MILES

您的新腕表蕴含各种精密细节。首先，让我们大致了解一下！



设置时间和日期

首先, 从设置正确时间开始。
仅需操控表冠就可以完成!



设置日期:

1. 将表冠拉出至中间位置(位置2)。

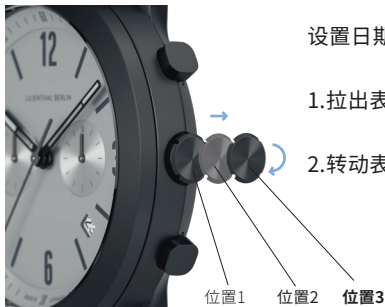
2. 逆时针转动表冠至正确日期。

请注意: 不建议在21:00和1:00之间设置日期, 因为在此时段, 机芯会自动切换日期。

设置日期：

1.拉出表冠(位置3)。

2.转动表冠。



之后呢？

只需将表冠按入表壳
即可(位置1)。



基本计时功能

只需按两次按钮,即可轻松测量时间。



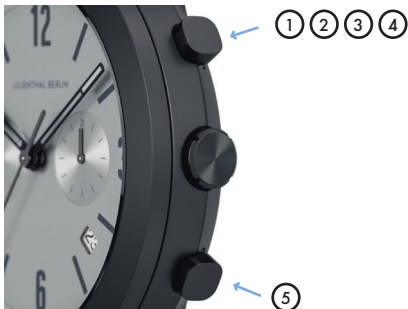
通过操作两个按钮使用计时器功能: **按钮 A** 和 **按钮 B**

使用 **按钮 A** 控制开始 (1) 和停止 (2)。

使用 **按钮 B** 重置计时功能 (3)。

计算累积时间

您可以按需要多次暂停和重启计时功能。



按钮 A 用于启动和暂停计算累积时间。您可以按照 (1) - (4) 的顺序, 按需要重复该操作。

按钮 B 用于重置计时功能 (5)。

手动调校

如果计时针未回到零位置,便需要手动调校。



1. 将表冠拉至**位置 3** (1), 然后按下**按钮 A** (2) 重置秒针。
2. 按下**按钮 A** (2), 直至秒针归零。



连续按下**按钮 A (2)** 可使表针快速转动。

3. 将**表冠 (3)** 按回位置 1。

技术参数

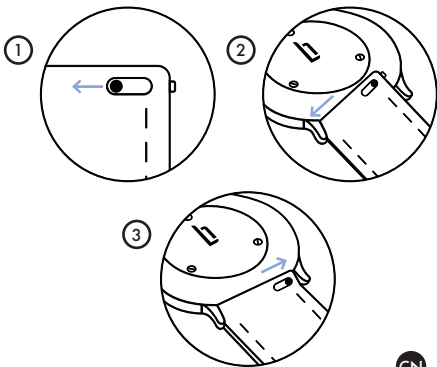
我们在 Chrono Miles 仅使用优质零部件和材料，
其中包括：

机芯：	日本制造商 Miyota
机芯型号：	石英机芯 0S21
表壳材质：	316L 不锈钢
表镜：	蓝宝石玻璃
防水性能：	50 米
生产国家：	德国

更换表带

如果您想把腕表改头换面,只需更换一下表带!

更换表带时,向内推动表带中的小连接销**(1)**.通过这种方式缩短连接轴,以便取下表带**(2)**.将连接销再向内推动,将连接轴放入表壳的小孔中,就可以重新固定好表带。**(3)**.



保养说明

Chrono Miles：精密技术，操作简单。

此款手表几乎可在任何场景中使用，但是我们不建议您带着它去深海潜水。防水等级达 5 ATM，可防止任何水花喷溅或水雾喷洒。

如果电池电量耗尽，只需将手表送至值得信赖的珠宝商或手表维修师处。他们可在几分钟内轻松为您更换电池！我们的皮革表带为天然材质。因此，随着时间的推移，表带外观可能会发生变化，可能会产生细腻的光泽，使其成为真正独一无二的存在！用湿布即可轻松擦去灰尘，但要避免表带过于潮湿。

我们的表带采用不锈钢材料，在潮湿环境中亦可避免生锈。

质量保证

我们希望您对新腕表充满信心。

我们为这款腕表提供 24 个月的保修服务。在此期间，如果产品出现任何问题，最合适的解决办法是直接联系我们的顾客服务团队。我们会尽快解决问题，让您继续享受美好时光！

联系方式

有任何问题或想简单沟通一下?我们随时为您效劳!

service@lilienthal-berlin.hk

(852)3955 7500

<https://apac.lilienthal.berlin/>

Zeitgeist Asia Limited

香港铜锣湾勿地臣街1号

时代广场一期32楼3206室

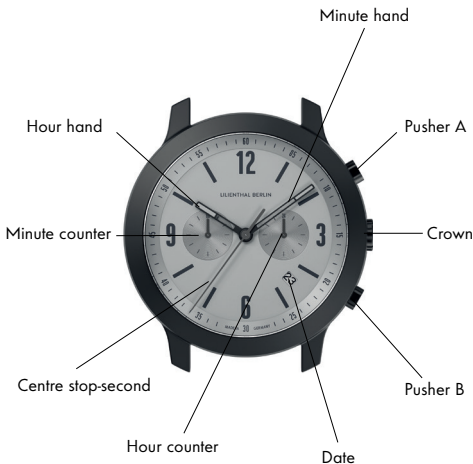
INTRODUCTION CHRONO MILES

*Technical and functional – stay on track with
your new Chronograph!*

The Chrono Miles is a fascinating timepiece. Functional, playful, and precise to a second. With two pushers and a crown, the technically complex mechanism is easy to use. And with these instructions, you'll learn how and when to press them!

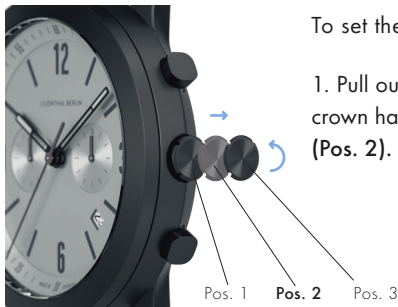
THE CHRONO MILES

*Your new watch is full of details.
But first, an overview!*



SETTING TIME AND DATE

*Everything starts with the right settings.
To do so, all you need is the crown!*



To set the date:

1. Pull out the crown halfway (Pos. 2).

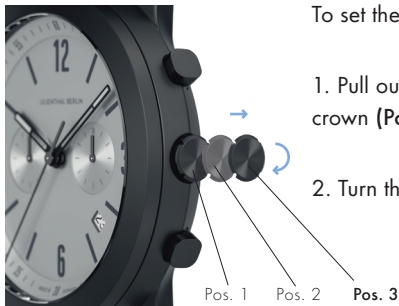
2. Turn the crown counterclockwise until the correct date is displayed.

Please note: It is not recommended to set the date between 9:00 PM and 01:00 AM, because during this period the date is automatically switched by the movement.

To set the time:

1. Pull out the crown (Pos. 3).

2. Turn the crown.

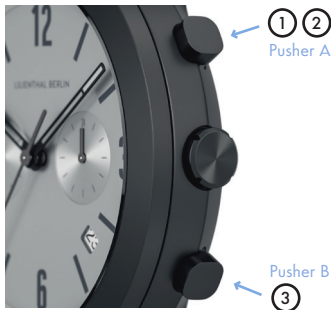


All good?
Then simply push
the crown back
into the case
(Pos. 1).



SIMPLE TIMER FUNCTION

*Easily measure a time with just
two presses of a pusher.*



The timer function is operated by the two pushers:
Pusher A and **Pusher B**.

Pusher A controls START (1) and STOP (2).
Pusher B resets the timer function (3).

ACCUMULATED-TIME MEASUREMENT

You can pause and resume the timer function as often as you need.

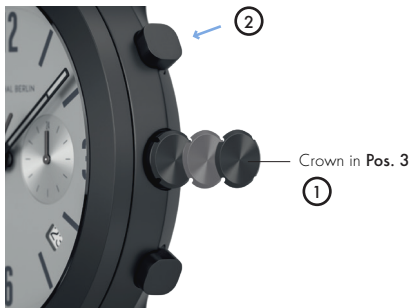


Pusher A starts and stops the time measurements. This can be done as many times as you like in a row (1) - (4).

Pusher B resets the timer function (5).

MANUAL RESET

Should the timer function hands not return to the zero position, you can reset them yourself.



1. Pull out the **crown** to Pos. 3 (1) and then press **Pusher A** (2) to reset the stop-second.
2. Press **Pusher A** (2) until the stop-second is in the zero position again.



The hand can be advanced rapidly by continuously pressing **Pusher A** (2).

3. Push the **crown** (3) back into Pos. 1.

TECHNICAL DETAILS

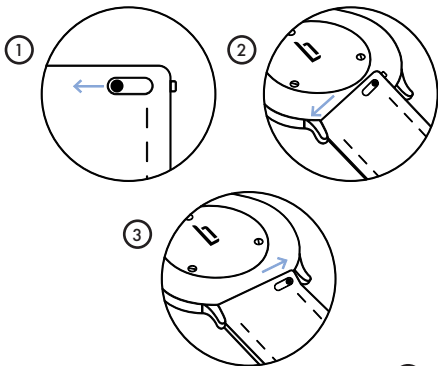
We only use the best components and materials for the Chrono Miles, including:

Movement:	Japanese manufacturer Miyota
Caliber:	Quarz Caliber 0S21
Case Material:	316L Surgical steel
Glass:	Sapphire-hardened glass
Quality:	Made in Germany

CHANGING THE STRAP

*If you feel like your watch needs a new look,
simply change the strap!*

To change the strap, press the small pin inwards (1). Remove the strap from the case (2). Replace with a new strap by clicking the pin back into the holes in the case (3).



CARE INSTRUCTIONS

*The Chrono Miles: technically complicated
but easy to maintain.*

This watch can accompany you almost anywhere, though we wouldn't recommend going deep-sea diving with it. With a water resistance of 5 ATM it's protected from any water splashes or sprays.

If the battery loses its power, simply take the watch to your trusted jeweler or watchmaker. They can easily replace the battery in a matter of minutes!

Our leather straps are natural products. For this reason, their appearance may change over time and may develop a delicate patina – making them truly unique items! Specks of dust can be easily removed with a damp cloth but avoid getting the strap too wet.

Our straps made from stainless steel are resistant to rusting in humid conditions.

WARRANTY

*We want to make you feel confident
with your new watch.*

This watch comes with a warranty of 24 months. Should there be any issues with the product during this time, it's best that you directly contact our customer service team. We'll take care of it quickly, so that you can continue to enjoy the best of times!

CONTACT

*Have some questions or simply want a quick chat?
We're here for you!*

service@lilienthal-berlin.hk
(852) 3955 7500
<https://apac.lilienthal.berlin/>

Zeitgeist Asia Limited
Unit 3206, 32/F, Tower One
Times Square, 1 Matheson Street
Causeway Bay, Hong Kong



LILIENTHAL BERLIN