



INSTRUCTIONS

Our little
relationship guide

THE NEOLUX Take things slow. Get to know each other before getting intimate.

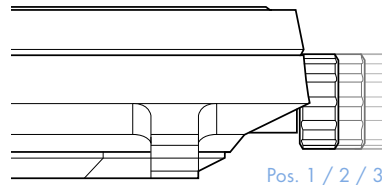
Your “Neolux” is an automatic watch. Therefore, it ticks a little differently. But with the correct care and attention, nothing stands in the way of a great relationship.
At the heart of the watch, there is a delicate construction of screws, cogs and springs that displays the time through the power of mechanical energy. This movement is well protected and doesn’t require too much care.

You should, however, know a couple of important things.

A. **IT’S THE INSIDE
THAT COUNTS**

THE CROWN With the crown you can touch the most delicate parts of the “Neolux”.

The crown is all that is needed to operate the “Neolux”. We recommend that you take the watch off before you operate the crown.
It has three positions that perform different functions:
1 (in the case) to wind the watch up;
2 (pulled out half way) to select the date;
3 (pulled out completely) to set the time.

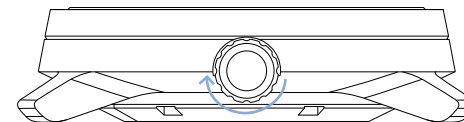


B. **TOUCH
THE HEART**

WINDING UP Your initiative is required: It’s up to you to set everything in motion!

If the “Neolux” stops moving, carefully turn the crown clockwise while it’s in position 1. After approx. 40 turns the winding spring is re-tightened and the watch runs again.

Pos. 1



C. **IT JUST TAKES
A LITTLE TWIST**

**TIME, DATE,
AND WEEKDAY** The settings have to be just right. It’s as simple as that. You just need a bit of tact.

The movement includes a day-of-the-week display in either English or Spanish. To select your preferred language, pull the crown all the way out (position 3). Turn the crown until midnight, the moment when the date begins to change. Continue turning, and between 12:00 and 1:00 AM, the day display will switch to the other language. Turning further between 2:00 and 3:00 AM will switch it back to the previous language. Make sure to complete these two “clicks” fully.

Then, press the crown to position 2 and turn it clockwise to set the day of the week in your chosen language. Turn it counterclockwise to set the correct date.

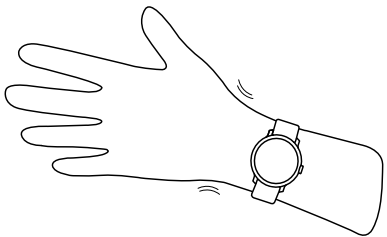
Finally, use position 3 to set the current time.

Everything set? Push the crown back into the case.

D. **IT’S ALL ABOUT
THE TIMING**

POWER RESERVE Once it is running, it's running. But a bit of motion doesn't hurt either...

The "Neolux" has a power reserve of 42 hours. That's how long it will run all by itself. When you are wearing it, it is powered by the kinetic energy from your movement. If the "Neolux" stops moving, simply wind it up again.

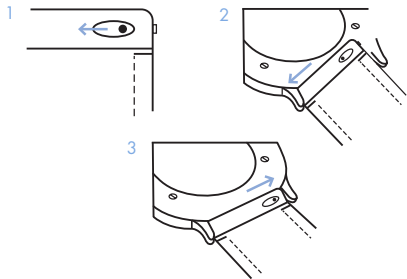


E.

**DON'T STOP
MOVING**

SWAPPING STRAPS Looking for some variety? No problem, that's what our interchangeable straps are for!

To change the strap, press the pin inwards to release it (1). The strap can then be removed (2). To re-attach it, click the pin back into the pin holes (3).



F.

**TRY SOMETHING
NEW TONIGHT**

TECHNICAL DETAILS Only the best of the best. That's what makes the "Neolux" so exclusive.

Movement: Japanese automatic caliber by Miyota
Complication: Date and Weekday
Power reserve: 42 hours
Case size: 42 mm
Case thickness: 11,5 mm
Case material: 316L stainless steel with screwed-on exhibition case back
Glass: Sapphire-hardened mineral glass
Water resistance: 5 ATM

CARE INSTRUCTIONS The "Neolux" is always there for you. Return the favour and take good care of it.

316L stainless steel and sapphire-hardened mineral glass are instrumental in protecting your "Neolux" – but avoiding excessive force is also advised. To prevent erroneous operation of the watch, you should take it off before winding or adjusting it. If you don't want to wear the watch for a while, you should still move it every now and then. This will keep the automatic movement in motion. Although the "Neolux" is waterproof up to 5 ATM, we recommend you take it off before taking a shower or a bath. Dust and other light stains are best removed with a dry or damp piece of cloth.

WARRANTY From the date of purchase you are entitled to a warranty of 24 months that is valid for material and manufacturing defects. In the case of a warranty claim, please contact our customer service department. Naturally, that is not a blank cheque: self-induced damage of your "Zeitgeist" is not covered.!

RECYCLING & DISPOSAL Used electrical appliances and batteries must not be disposed of in private household waste but must be handed in at authorized collection depots. This way, you ensure environmentally-friendly disposal and recycling of all parts. Thank you for caring!

CONTACT
Lilienthal Lifestyle GmbH
Boxhagener Straße 78
10245 Berlin

[Contact form](#)

www.lilienthal.berlin/en

