

USER INSTRUCTIONS



Chronograph LP



LILIENTHAL BERLIN

TABLE OF CONTENTS

Introduction	01
The Chronograph	02
Setting the time and date	03
Simple timer function	06
Accumulated-time measurement	07
Interval-time measurement	08
Manual reset	10
Technical details	12
Changing the strap	13
Care instructions	14
Warranty	15
Recycling & Disposal	16
Contact	17

For demonstration purposes in this instruction manual, we use images of the Dark Silver & White edition.

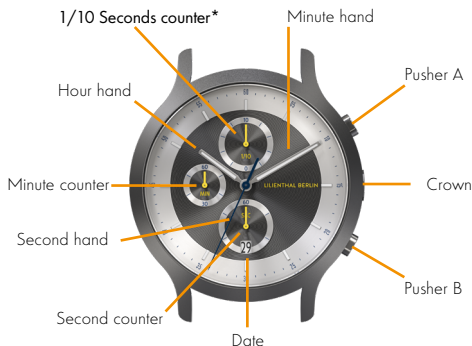
INTRODUCTION

Technical and functional – stay on track with your new Chronograph!

The Chronograph is a fascinating timepiece. Functional, playful, and precise to the tenth of a second. With two pushers and a crown, the technically complex mechanism is easy to use. And with these instructions, you'll learn how and when to press them!

THE CHRONOGRAPH

Your new watch is full of intricate details. But first, an overview!



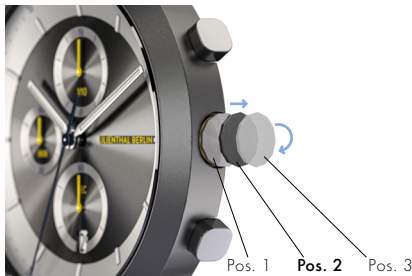
***Attention:** Counts only the first 60 seconds; after that, it continues running in the background without the hand moving. When you stop it, it will display the measured time.

SETTING THE DATE AND TIME

Everything starts with the right setting. And for that, you only need the crown!

To set the date:

1. Pull out the crown halfway (Pos. 2).



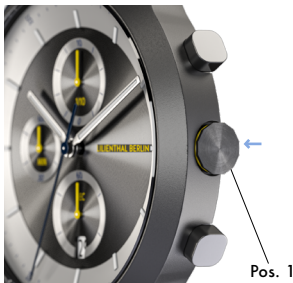
2. Turn the crown clockwise until the correct date is displayed.

To set the time:



1. Pull out the crown (**Pos. 3**) when the second hand is at the 12 o'clock position. It will stop instantly, while the hour and minute hands can be adjusted to the correct time by turning the crown.

2. Turn the crown to set the current time.

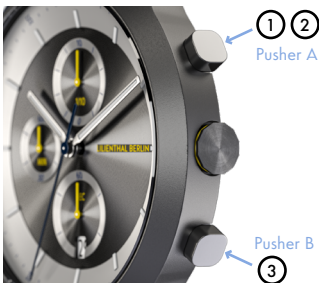


All good?
Then simply push
the crown back into
the case (Pos. 1).

Please note: If you adjust the date between 9:00 PM and 1:00 AM, the next day might not switch correctly. Also, make sure to set the correct AM or PM time. You can check this by observing whether the date changes while setting the time.

SIMPLE TIMER FUNCTION

Easily measure a time with just two presses of a pusher.



The timer function is operated by the two pushers: **Pusher A** and **Pusher B**.

Pusher A controls START (1) and STOP (2).
Pusher B resets the timer function (3).

ACCUMULATED-TIME MEASUREMENT

You can pause and resume the timer function as often as you need.



Pusher A starts and stops the time measurements. This can be done as many times as you like in a row (1) - (4).

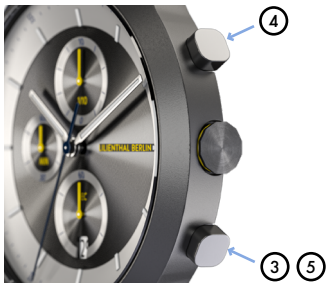
Pusher B resets the timer function (5).

INTERVAL-TIME MEASUREMENT

Easily measure how much time has passed with the press of a button.



Press **Pusher A** to **START** the timer (1) and **STOP** it with **Pusher B** (2). Timing continues in the background.



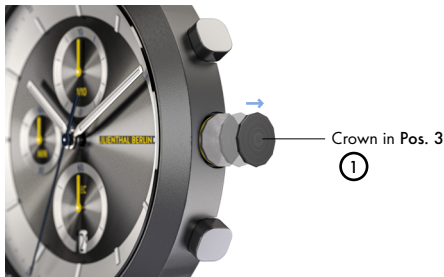
(3) Another press on **Pusher B** fast-forwards the hands to the current measurement time. You can check the elapsed time with **Pusher B** as often as you like.

(4) To STOP the measurement press **Pusher A**.

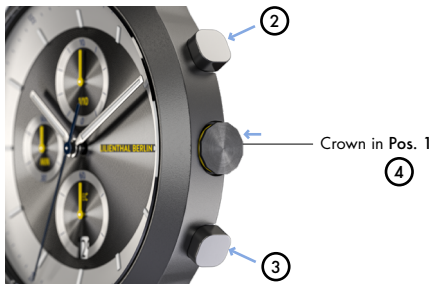
(5) To reset the display to zero, press **Pusher B**.

MANUAL RESET

Should the timer function hands not return to the zero position, you can reset them yourself.



Pull out the crown to **position 3 (1)**.



(2) By pressing **Pusher A**, you reset the 1/10-second counter to zero.

(3) By pressing **Pusher B**, you reset the second and minute counters.

(4) When you are finished, push the crown back into the case.

TECHNICAL DETAILS

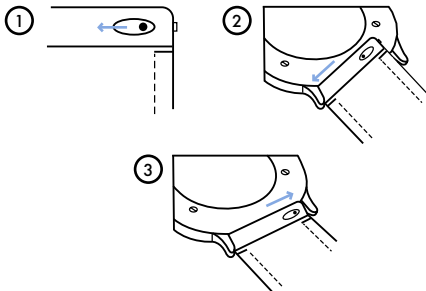
We only use the best components and materials for the Chronograph, including:

Movement:	TMI Caliber VD57
Case Material:	316L Surgical steel
Case size:	42,5 mm , height: 10.85 mm
Glass:	Sapphire-hardened mineral glass
Water resistance:	5 ATM

CHANGING THE STRAP

If you feel like your watch needs a new look, simply change the strap!

To change the strap, press the small pin inwards (1). Remove the strap from the case (2). Replace with a new strap by clicking the pin back into the holes in the case (3).



CARE INSTRUCTIONS

The Chronograph: technically complicated but easy to maintain.

This watch can accompany you almost anywhere, though we wouldn't recommend going deep-sea diving with it. With a water resistance of 5 ATM it's protected from any water splashes or sprays. If the battery loses its power, simply take the watch to your trusted jeweler or watchmaker. They can easily replace the battery in a matter of minutes!

Our leather straps are natural products. For this reason, their appearance may change over time and may develop a delicate patina – making them truly unique items! Specks of dust can be easily removed with a damp cloth but avoid getting the strap too wet.

Our straps made from stainless steel are resistant to rusting in humid conditions.

WARRANTY

We want to make you feel confident with your new watch.

This watch comes with a warranty of 24 months. Should there be any issues with the product during this time, it's best that you directly contact our customer service team. We'll take care of it quickly, so that you can continue to enjoy the best of times!

RECYCLING & DISPOSAL

And when its time is up?

Used electrical appliances and batteries must not be disposed of in private household waste but must be handed in at authorized collection depots. This way, you ensure environmentally-friendly disposal and recycling of all parts. Thank you for caring!



WEEE-Reg.-Nr.
DE 24378860

CONTACT

[Contact form](#)

Lilienthal Lifestyle GmbH
Boxhagener Straße 78
10245 Berlin

www.lilienthal.berlin/en



LILIENTHAL BERLIN